

GRAND RAPIDS
September
14-17

NASAA ASSEMBLY 2016



HOSTED BY THE MICHIGAN COUNCIL FOR ARTS & CULTURAL AFFAIRS

TABLE OF CONTENTS

Welcome

PAGE 3

Hotel Floor Plans

PAGE 4

Schedule at a Glance

PAGE 6

Sessions and Events

PAGE 8

General Information

PAGE 19

2016 NASAA
Leadership Awards

PAGE 20

Thank You!

PAGE 22

From the President

PAGE 24

Sponsors &
Acknowledgments

PAGE 25

Board and Staff

PAGE 26

We're proud
to support
the
talented professionals
who enable the
arts
to thrive in our
communities,
enrich
our minds and
beautify our
lives.

meijer[®]

Proud supporter of the
National Assembly of State Arts Agencies

Welcome, NASAA colleagues!

The Michigan Council for Arts & Cultural Affairs is thrilled to serve as your host for NASAA Assembly 2016. We want to ensure that you have a great time while you stay in our great state.

You will be visiting Michigan's west side and the community of Grand Rapids, historically known for its contributions to design, and furniture making in particular. West Michigan is home to companies such as Steelcase, Haworth and Herman Miller – it is often said that there isn't an uncomfortable chair anywhere in Grand Rapids. While that may be something of an exaggeration, it isn't an exaggeration to say that this is a high-quality "maker community," and you will see that in everything from the arts to the beer!

The maker culture together with a highly walkable downtown make Grand Rapids an ideal setting for NASAA Assembly 2016. The locale strikes the perfect balance of excitement, comfort and creativity conducive to rich learning experiences during the day and fun entertainment in the evening.

Within just a few blocks of the Amway Grand are a variety of museums, unique restaurants and breweries, theatres, and performance centers, including an amazing ballet facility. You are coming to Grand Rapids the week prior to ArtPrize, when 1,000-plus artists are installing their work for the public competition! And you have to walk past Alexander Calder's *La Grande Vitesse* – the first public artwork funded by the National Endowment for the Arts.

There are so many adventures in Grand Rapids that you won't have time to take them all in, so make plans before the conference to stroll through Meijer Gardens or take the short drive over to Lake Michigan...or just plan a return trip!

However long you can stay, we hope you enjoy every minute of your visit!



Andrew Buchholz
Chairman



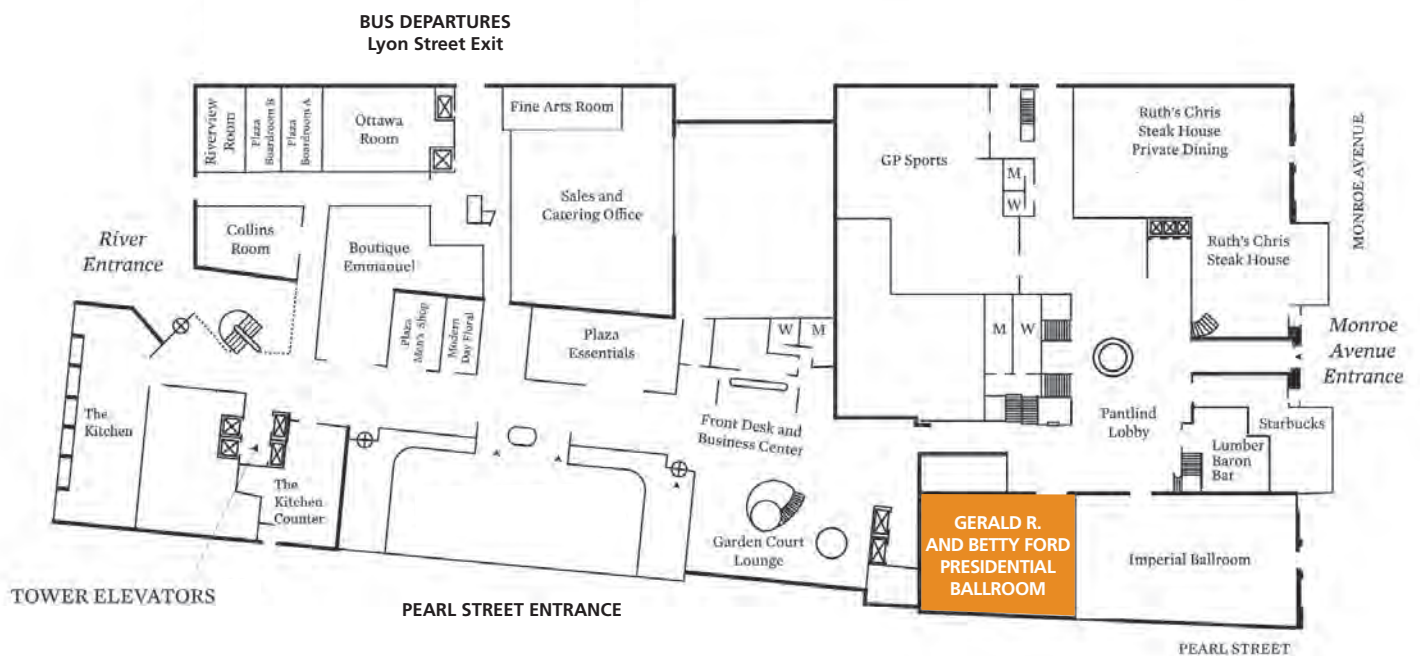
John Bracey
Executive Director

Amway Grand Plaza Hotel Floor Plans

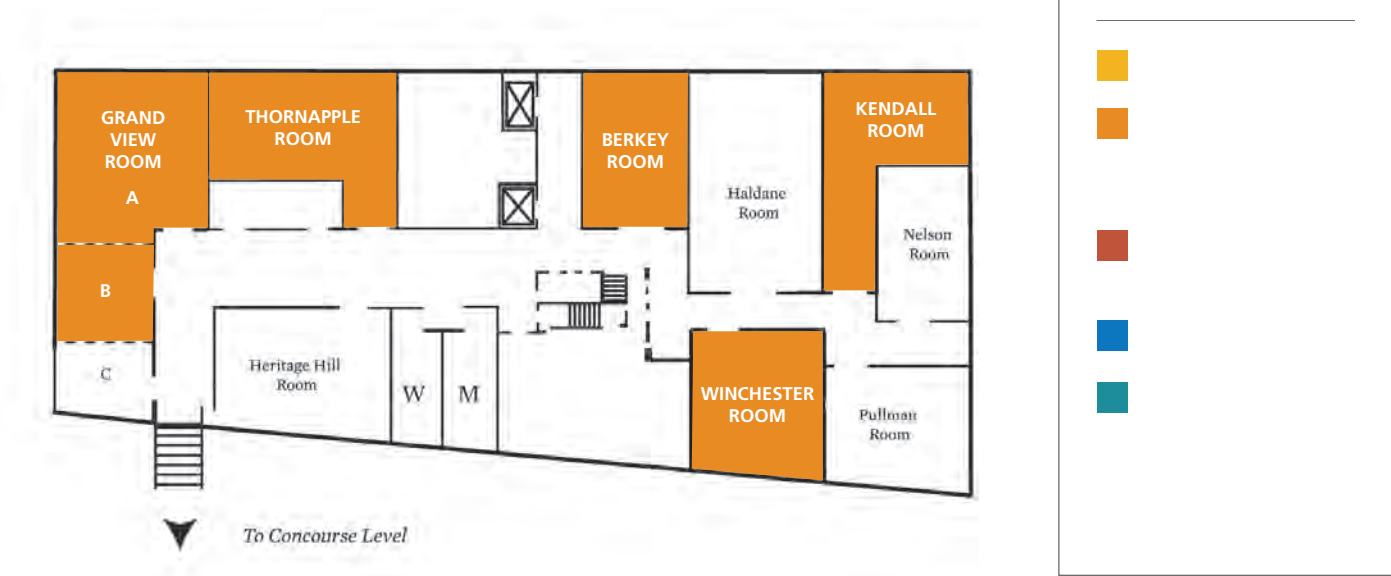
CONCOURSE LEVEL — 2ND FLOOR



LOBBY LEVEL — 1ST FLOOR



CONFERENCE LEVEL — 3RD FLOOR



Use a QR code scanner on your smartphone or tablet to access more information about NASAA Assembly 2016 sessions, speakers and artists (as well as local dining options and attractions). This tech tool conserves paper – good news for the planet and for NASAA's budget. If you don't have a QR reader, visit your app store for options.



MOBILE-FRIENDLY
AGENDA



PLENARY
SPEAKERS



CONCURRENT
SESSION
PRESENTERS AND
FACILITATORS



PEER SESSION
AGENDAS



ARTISTS



DINING &
ATTRACTIONS

SCHEDULE AT A GLANCE

Thursday, September 15

1:00 – 2:30 P.M.

WELCOME AND ROLL CALL

Ambassador Ballroom West, Concourse Level

3:00 – 4:00 P.M.

BRIEFING SESSIONS

ArtPrize

Emerald A Room, Concourse Level

Using Data to Make Your Case

Emerald B Room, Concourse Level

Rural Economies and the Arts

Thornapple Room, Conference Level

The Mosaic Model in Action

Governor's Room, Concourse Level

Demographics of the Arts Work Force: The Future Starts Here

Kendall Room, Conference Level

ESSA and Well-Rounded Education

Pearl Room, Concourse Level

4:30 – 5:30 P.M.

BRIEFING SESSIONS

All briefing sessions repeat.

6:30 – 8:30 P.M.

NASAA ASSEMBLY 2016 RECEPTION

Grand Rapids Public Museum

272 Pearl Street NW, Grand Rapids, MI 49504

Exit from the Pearl Street entrance (main hotel entrance on the Lobby Level), turn right and cross the bridge. Or board a shuttle at the Lyon Street exit of the hotel (near elevators). Shuttles circulate between 6:30 and 8:30 P.M.

Friday, September 16

7:30 – 8:15 A.M.

BREAKFAST

*Ambassador Ballroom East & Crown Foyer,
Concourse Level*

8:30 – 10:30 A.M.

PEER SESSIONS

Executive Directors

*Gerald R. and Betty Ford Presidential
Ballroom, Lobby Level*

Chairs and Council Members

Emerald Room, Concourse Level

Deputy Directors

Pearl Room, Concourse Level

Arts Education Managers

Sen. Vandenburg B Room, Concourse Level

Communications/Public Information Officers

Berkey Room, Conference Level

Community Development Coordinators

Winchester Room, Conference Level

Folk and Traditional Arts Coordinators

Grand View Room, Conference Level

Grants and Fiscal Officers

Thornapple Room, Conference Level

11:00 A.M. – NOON

PLENARY SESSION

Ambassador Ballroom West, Concourse Level

NOON – 1:00 P.M.

NETWORKING LUNCHEON

*Ambassador Ballroom East & Crown Foyer,
Concourse Level*

1:00 – 1:45 P.M.

KEYNOTE PERFORMANCE

Ambassador Ballroom West, Concourse Level

2:10 P.M.

BUS DEPARTURES TO OFF-SITE SEMINARS

From Lyon Street exit of hotel (near elevators)

2:30 – 4:30 P.M.

SEMINARS

Design Thinking for State Government

*Kendall College of Art and Design
Historic Courtroom, Room 217 (2nd Floor)
17 Pearl Street NW
Grand Rapids, MI 49503*

Bridging Difference and Diversity

*Grand Rapids Art Museum
101 Monroe Center Street NW
Grand Rapids, MI 49503*

Flashes of Inspiration 2016

*Amway Grand Plaza, Pantlind Ballroom,
Concourse Level*

EVENING

DINNER ON YOUR OWN

Saturday, September 17

7:45 – 9:00 A.M.

AWARDS BREAKFAST

Ambassador Ballroom East, Concourse Level

9:30 – 11:00 A.M.

WORKSHOPS

Improv: An Asset for Everyone

Emerald Room, Concourse Level

Pathways to Arts & Military Partnerships

Thornapple Room, Conference Level

Cultivating Resiliency in a Crazy World

Grand View Room, Conference Level

Taking the Pulse of Arts Advocacy Efforts

Pearl Room, Concourse Level

Responding to Community Trauma

Berkey Room, Conference Level

11:30 A.M. – 1:00 P.M.

CLOSING SESSION

Ambassador Ballroom West, Concourse Level

1:15 – 3:15 P.M.

ADVOCATE FOR ARTS EDUCATION: STATE ARTS AGENCY/STATE ARTS ACTION NETWORK JOINT FORUM

Pantlind Ballroom, Concourse Level

Lunch provided for Joint Forum participants

SESSIONS AND EVENTS

Thursday, September 15

1:00 – 2:30 P.M.

WELCOME AND ROLL CALL

*Ambassador Ballroom West,
Concourse Level*

State pride is on parade at our annual roll call of the states! Lend your voice to this joyous NASAA tradition. The opening ceremonies include welcomes from our Michigan hosts and Lt. Gov. Brian Calley, plus performances from Kinetic Affect and Mosaic Youth Theatre of Detroit.



3:00 – 4:00 P.M.

BRIEFING SESSIONS

Briefing sessions pack a punch, each taking just 60 minutes to showcase new research and best practices. All briefing sessions repeat from 4:30 – 5:30 P.M., so choose two.

ArtPrize

Emerald A Room, Concourse Level

Each fall more than 400,000 visitors descend upon Grand Rapids for ArtPrize, where anyone can find a voice in the conversation about art and why it matters. Art infuses the city and it's all free and open to the public. Two \$200,000 grand prizes and eight category prizes totaling \$500,000 are awarded, with half chosen by smartphone-enabled public vote and half decided by a jury of art experts. It's unorthodox, surprising, delightful and sometimes confounding. Learn the highs and lows and ins and outs of this festival and its uniquely experimental approach to civic engagement and economic impact.

PRESENTER:

Christian Gaines, Executive Director, ArtPrize



Please silence your phone during all sessions.

Using Data to Make Your Case

Emerald B Room, Concourse Level

Compelling data – communicated well! – can ignite successful arts advocacy efforts. Good data shapes policy decisions, drives home your public value message and serves as a rallying point for advocates and elected officials alike. Learn how Massachusetts, Michigan and Rhode Island designed research strategically and are using the findings to empower their case for arts support.

PRESENTERS:

Randy Rosenbaum, Executive Director,
Rhode Island State Council on the Arts
(moderator)

David Slatery, Deputy Director,
Massachusetts Cultural Council

Sarah Gonzales Triplett, Director of
Public Policy, Creative Many Michigan

Rural Economies and the Arts

Thornapple Room, Conference Level

Programs built to support and grow the creative economy in rural communities can have a powerful effect on residents' lives and livelihoods in some of our nation's most economically challenged areas. Join us to take a look at programs and partnerships designed specifically to broaden sustainable business opportunities, nurture authentic cultural assets and help small communities to flourish through the arts.

PRESENTERS:

Margaret Hunt, Director, Colorado
Creative Industries (moderator)

Lori Meadows, Executive Director,
Kentucky Arts Council

Sheri Jarvis, Montana Artrepreneur
Program Director, Montana Arts Council

The Mosaic Model in Action

Governor's Room, Concourse Level

Artists from Mosaic Youth Theatre of Detroit share the theory and the practice of their exemplary creative youth development program. This model relies on maintaining a high-expectations culture of excellence, building a supportive safe-space environment and creating empowerment opportunities for youth leadership. Research has proven how this approach has dramatic positive effects on the artistic, life and workplace skills of participating students. Join this briefing to hear more from the young artists themselves.

PRESENTERS:

Traci Slater-Rigaud, Director, National Arts
and Humanities Youth Program Awards,
NASAA (moderator)

Rick Sperling, Founder and President,
Mosaic Youth Theatre of Detroit

[MORE BRIEFING SESSIONS >](#)

SESSIONS AND EVENTS

Thursday, September 15 *(continued)*

Demographics of the Arts Work Force: The Future Starts Here

Kendall Room, Conference Level

As cultural organizations, private grant makers and public agencies embrace diversity, equity and inclusion, there is an urgent need for reliable data on the demographics of our field. Accurate information can paint a true picture of the current cultural work force, inform future action agendas and help monitor progress over time. DataArts (formerly the Cultural Data Project) is leading a new national initiative to collect standardized demographic data on the nonprofit cultural work force. Practical tools were developed in response to field input and in consultation with leaders from the cultural sector over 18 months and were piloted in Houston. This briefing shares more about the methodology and the results.

PRESENTERS:

Kelly Brown, Director, D5 Coalition

Nicholas Crosson, Research Manager,
DataArts

Ryan Stubbs, Research Director,
NASAA (moderator)

Beth Tuttle, President and CEO, DataArts

ESSA and Well-Rounded Education

Pearl Room, Concourse Level

Following the passage of the Every Student Succeeds Act (ESSA), states and school districts are retooling their plans for education. This briefing provides a succinct primer on changes in state education policy and sheds light on the implications and opportunities for the arts as part of a well-rounded education. Join us to discuss how state arts agencies can shape arts education policy, meet the new director of the Arts Education Partnership (AEP), and learn more about the resources available through AEP and its allies.

PRESENTER:

Jane Best, Director, Arts Education Partnership

4:30 – 5:30 P.M.

BRIEFING SESSIONS

All briefing sessions repeat during this time. See above for session and speaker details.



Please silence your phone during all sessions.

6:30 – 8:30 P.M.

NASAA ASSEMBLY 2016 RECEPTION

*Grand Rapids Public Museum
272 Pearl Street NW
Grand Rapids, MI 49504*



Meet new colleagues and reconnect with friends at the Grand Rapids Public Museum, Michigan's oldest (and perhaps most eclectic) museum. Its collection includes more than 250,000 artifacts celebrating the theme of curiosity. While you're there, the Lansing Unionized Vaudeville Spectacle, affectionately known as The LUVS, performs a gypsy-jazz-meets-Americana musical variety show. The Public Museum is a very short walk: exit from the Pearl Street entrance (main hotel entrance on the Lobby Level), turn right and cross the bridge. Or board a shuttle at the Lyon Street exit of the hotel (near elevators). Shuttles circulate between 6:30 and 8:30 P.M.



SESSIONS AND EVENTS

Friday, September 16

7:30 – 8:15 A.M.

BREAKFAST

*Ambassador Ballroom East & Crown Foyer,
Concourse Level*

8:30 – 10:30 A.M.

PEER SESSIONS

Peer sessions offer staff and council members the opportunity to network and exchange ideas within job-alike groups. Meeting agendas, developed by volunteer coordinating teams, are available at the NASAA registration desk, or scan the QR code above.



Peer Session
Agendas

Executive Directors

*Gerald R. and Betty Ford Presidential
Ballroom, Lobby Level*

Chairs and Council Members

Emerald Room, Concourse Level

Deputy Directors

Pearl Room, Concourse Level

Arts Education Managers

Sen. Vandenburg B Room, Concourse Level

Communications/Public Information Officers

Berkey Room, Conference Level

Community Development Coordinators

Winchester Room, Conference Level

Folk and Traditional Arts Coordinators
Grand View Room, Conference Level

Grants and Fiscal Officers

Thornapple Room, Conference Level

11:00 A.M. – NOON

PLENARY SESSION

*Ambassador Ballroom
West, Concourse Level*

Hear from two leading arts luminaries: National Endowment for the Arts Chairman Jane Chu and Aaron P. Dworkin, member of the National Council on the Arts and the Michigan Council for Arts & Cultural Affairs. Chairman Chu recognizes her state partners and reveals the findings of her Creativity Connects initiative. Aaron Dworkin speaks to the importance of public arts support in a diverse American democracy. And you're treated to a special performance by Naomi Yamaguchi, a young piano virtuoso who made her Carnegie Hall debut at the age of seven.





Please silence your phone during all sessions.

NOON — 1:00 P.M.

NETWORKING LUNCHEON

*Ambassador Ballroom East & Crown Foyer,
Concourse Level*

1:00 — 1:45 P.M.

KEYNOTE PERFORMANCE

*Ambassador Ballroom West,
Concourse Level*

Through his distinctive blend of personal storytelling and compelling performance, entrepreneur and musician Kai Kight invites you to seize opportunities for creativity and virtuosity in your work as public arts leaders.



2:10 P.M.

BUS DEPARTURES TO OFF-SITE SEMINARS

*From Lyon Street exit of hotel
(near elevators)*

2:30 — 4:30 P.M.

SEMINARS

New this year, Assembly seminars are longer sessions allowing for deeper exploration of topics connected to state arts agency innovation and change. Choose one of three. Refreshments are included.

Design Thinking for State Government

*Kendall College of Art and Design (KCAD)
Historic Courtroom, Room 217 (2nd Floor)
17 Pearl Street NW
Grand Rapids, MI 49503*

*Bus to the seminar departs promptly at **2:10 P.M.**
from the Lyon Street exit of the hotel (near elevators).*

Are you looking for new ways to increase the impact of your programs, collaborations or procedures? The growing field of human-centered design can help. It uses a blend of creativity, curiosity, research and data analysis to unlock truly challenging problems and deliver fresh solutions. This session walks you through powerful examples of how this discipline is being used to transform government services, and offers hands-on exercises and tools you can use to spur innovation in your own agency. After the seminar adjourns at

SESSIONS AND EVENTS

Friday, September 16 *(continued)*

4:30 P.M., enjoy a brief browse of the exhibits in The Fed Galleries @ KCAD, an ArtPrize hub. Walk back to the hotel or take a return bus, departing at 5:15 P.M.

FACILITATOR:

Stephanie Wade, Former Director,
Innovation Lab @ OPM



Bridging Difference and Diversity

Grand Rapids Art Museum (GRAM)
101 Monroe Center Street NW
Grand Rapids, MI 49503

*Bus to the seminar departs promptly at **2:10 P.M.**
from the Lyon Street exit of the hotel (near elevators).*

America is a continual work in progress, with demographic, social, economic and political shifts sparking new conversations about diversity

in the arts field. Public arts agencies have an important role to play as facilitators, standard bearers and leaders of inclusive practices. This seminar offers a framework for recognizing the ways that identity and power differences can create barriers to understanding. It offers practical tools for addressing the individual, interpersonal, institutional and cultural dynamics involved in bridging differences among groups with diverse experiences and needs. After the seminar adjourns at 4:30 P.M., enjoy a brief browse of the exhibits at GRAM, an ArtPrize hub. Walk back to the hotel or take a return bus, departing at 4:45 and 5:30 P.M.

FACILITATORS:

Angela Bryant, J.D., Senior Consultant
and Cofounder, VISIONS Inc.

Lisa Puzon, D.T. Psy., Consultant,
VISIONS Inc.





Please silence your phone during all sessions.



Flashes of Inspiration 2016

*Amway Grand Plaza, Pantlind Ballroom,
Concourse Level*

Flashes of Inspiration is back! Come see the latest batch of bright ideas and new programs from state arts agencies across the nation in a lively and inspiring mix of presentations taking just five minutes each. As part of this year's seminar format, we follow the presentations with a facilitated whole-group discussion about how state arts agencies can harness creativity and programmatic ingenuity within daily constraints. American Sign Language interpretation will be available throughout the session.

FACILITATORS:

Eric Giles, Learning Services Manager, NASAA
Cindy Todd, Ph.D., Program Chair, Art
Education, Kendall College of Art and Design

PRESENTATIONS:

- Iowa Arts Council – Paper Piles to Electronic Files: Going Digital in Iowa
- Maine Arts Commission – How to Get a 95% Response Rate to Your Arts Education Census
- Michigan Council for Arts & Cultural Affairs – What Is Stewardship: MCACA Reaction to the Flint Water Crisis
- New Hampshire State Council on the Arts – Creative Corrections
- North Carolina Arts Council – African American Music Trails
- Ohio Arts Council – Creative Aging Ohio
- Oregon Arts Commission – Poetry Out Loud and the Oregon School for the Deaf
- Utah Division of Arts & Museums – Bite-Size Poetry
- Vermont Arts Council – It's a Thing: Vermont Creative Network
- Wyoming Arts Council – Art of the Hunt: Wyoming Traditions

EVENING

DINNER ON YOUR OWN

Wonderfully walkable, Grand Rapids offers a tasty lineup of restaurants, pubs and music hot spots. Scan the QR code to check out a helpful map locating fun and fabulous eateries and sites of note.



Dining &
Attractions

SESSIONS AND EVENTS

Saturday, September 17

7:45 – 9:00 A.M.

AWARDS BREAKFAST

Ambassador Ballroom East, Concourse Level

Join NASAA and your colleagues to honor outstanding state arts agency leadership. Read about the 2016 NASAA Leadership Awardees on pages 20-21. The program begins at 8:15, and ends with a drawing for two complimentary registrations to NASAA's 2017 Leadership Institute – you must be present to win!

9:30 – 11:00 A.M.

WORKSHOPS

Saturday morning workshops are opportunities for dialogue, reflection and action-oriented learning. Choose among five different topics relevant to state arts agency leadership.

Improv: An Asset for Everyone

Emerald Room, Concourse Level

The state arts agency environment is increasingly unpredictable, making adaptability and thinking on your feet more important than ever. Even when you have time to plan, superior listening, communication and collaboration skills are critical to any innovation effort. Improv theatre is a powerful vehicle for building fluency in all of these areas. Sharpen your skills in this

fun, participatory workshop. If you missed this session at the 2015 Leadership Institute, be sure to catch this “encore” opportunity.

FACILITATOR:

John Windmueller, WIT@Work Director,
Washington Improv Theater

Pathways to Arts & Military Partnerships

Thornapple Room, Conference Level

The arts can play a powerful role in assisting active-duty service members, reservists, veterans and their families. However, the armed forces support network includes many different entities, each with unique goals and areas of specialty – so aligning the goals of arts providers and military/veteran service providers is no small undertaking! Join this workshop to share your own experiences and learn more about how state arts agencies can forge successful partnerships and programs that address the needs of military and veteran populations.

FACILITATOR:

Marete Wester, Americans for the Arts

RESOURCE PANEL:

Chandra Boyd, Arts Learning in Communities
Director, Oklahoma Arts Council

Margi Vanderhye, Executive Director,
Virginia Commission for the Arts

Vicki Vitiello, Director of Operations & Arts
Learning, North Carolina Arts Council



Please silence your phone during all sessions.

Cultivating Resiliency in a Crazy World

Grand View Room, Conference Level

Our environment is unpredictable and complex – economically, politically, professionally and personally. As such, the need for adaptive leadership is growing. In fact, according to *Harvard Business Review*, resiliency is one of the most important 21st-century leadership skills. Being resilient means having the capacity to meet challenges and recover quickly from adversity – a powerful antidote to stress, burnout, and other forces that limit growth, creativity and vision. Can resiliency be learned? How do we move from surviving to thriving? This workshop examines how the science and practice of mindfulness and self-compassion can help build resiliency and what the public arts sector can gain from it.

FACILITATORS:

April Hadley, Co-founder and Mindfulness Based Stress Reduction Instructor,
Grand Rapids Center for Mindfulness
Laura Smith, Chief Advancement Officer,
NASAA

Taking the Pulse of Arts Advocacy Efforts

Pearl Room, Concourse Level

In addition to contentious presidential and congressional races, 86 of 99 state legislative chambers will hold elections this November. Are you ready for churn in your legislative

landscape? How are you preparing? What messages and advocacy strategies may work best in an increasingly polarized political environment? To serve as a springboard for group dialogue, this workshop includes real-time polling of session participants. A smartphone or tablet will help you participate, but we also provide paper surveys for the technologically unencumbered.

FACILITATOR:

Kelly Barsdate, Chief Program and Planning Officer, NASAA

RESOURCE EXPERT:

Isaac Brown, Legislative Counsel, NASAA

Responding to Community Trauma

Berkey Room, Conference Level

Too many communities across America have experienced recent acts of violence or civic discord. Such traumatic events can have far-reaching effects on community well-being, race relations, and what citizens and government need from each other. What is the role of state arts agencies in these situations? This workshop invites discussion of state arts agencies' desires and constraints and offers practical guidelines for developing a response.

FACILITATORS:

Pam Breaux, CEO, NASAA

Mollie Quinlan-Hayes, Deputy Director, South Arts;
Director, ArtsReady

SESSIONS AND EVENTS

Saturday, September 17 (continued)

11:30 A.M. — 1:00 P.M.

CLOSING SESSION

*Ambassador Ballroom West,
Concourse Level*

After our annual NASAA business meeting, we immerse ourselves in a quintessentially Michigan story told by Wild Swan Theater, nationally known for its audience accessibility programs. Wild Swan stages an adaptation of *Rosie the Riveter* based on interviews with a group of original “Rosies” who worked at the Ford Motor Company Bomber Plant during World War II. This piece honors the lives of women who filled thousands of factory jobs left empty by men suddenly called to war during a momentous era in American history.



1:15 — 3:15 P.M.

ADVOCATE FOR ARTS EDUCATION: STATE ARTS AGENCY/STATE ARTS ACTION NETWORK JOINT FORUM

Pantlind Ballroom, Concourse Level

Lunch provided for Joint Forum participants

The stakes are getting higher for arts education advocacy! New federal legislation gives states increased authority to decide what gets taught – and what doesn’t – in public schools. Meanwhile, new research shows that some states are falling short of their arts education requirements, leaving too many students behind. State level advocacy can close those gaps and ensure that every child gets the benefits of a well-rounded education that includes the arts. Join this forum to discuss how state arts agencies and state arts advocacy organizations can collaborate to lead successful arts education advocacy efforts. This session is offered through a partnership with Americans for the Arts.

FACILITATOR:

Jonathan Katz, Former CEO, NASAA

PRESENTER:

Kristen Engebretsen, Arts Education Policy
Manager, Americans for the Arts

GENERAL INFORMATION

Assembly 2016 Registration

Our conference registration desk will be open on the Concourse Level of the Amway Grand Plaza during these hours:

- *Thursday, September 15*
8:00 A.M. – 6:30 P.M.
- *Friday, September 16*
7:00 A.M. – 5:00 P.M.
- *Saturday, September 17*
7:00 – 10:00 A.M.

If you miss registration, please visit the NASAA Staff Office located in the Ruby Room, Concourse Level.

Badges

Your name badge is your “admission ticket” to Assembly sessions and special events, so please wear it at all conference functions. If you misplace your badge, visit the Assembly 2016 registration desk or ask a NASAA staff member for help.



Badges with a gold star indicate a first-time attendee. Please help us welcome all newcomers to our NASAA community!



Badges with a red star are worn by advocates from the State Arts Action Network, joining us as guests for selected Assembly events.

Business Services

The Plaza Business Center, located in the Amway Grand Plaza main lobby, offers copying, workstation access and printing 24 hours per day. Additional services are available upon request. Contact the front desk or the hotel concierge for assistance.

Documentation

NASAA uses a variety of media (including photography and video and audio recording) to capture conference proceedings. NASAA may disseminate selected material, images or recordings for documentation, education and promotion purposes. Selected plenary sessions will be filmed and streamed on-line for public access; this webcast may include incidental footage of audience members.

Photo Credits

- Page 12, top: Michael G. Stewart
- Page 12, bottom: Paul Hitz
- Page 14, left: Courtesy Kendall College of Art and Design of Ferris State University. Photo: Matt Gubancsik
- Page 14, right: Mark Sheinkman (American, b. 1963), *Concourse*, 2007; oil, alkyd and graphite on linen, 96 x 174½ inches; Grand Rapids Art Museum, museum purchase, 2008.19; image courtesy of the Grand Rapids Art Museum
- Page 18: Leisa Thompson Photography
- Page 21: Elysia Conner

2016 NASAA LEADERSHIP AWARDS

NASAA's national leadership awards showcase best practices of state arts agencies and regional arts organizations, recognize exemplary leadership, and demonstrate how government creatively, effectively and efficiently serves the public through the arts.

NATIONAL ASSEMBLY OF STATE ARTS AGENCIES

GARY YOUNG AWARD

This award recognizes an executive director who makes an extraordinary contribution to public support for the arts at the state, regional and national levels. Ideal candidates exhibit exemplary leadership, innovative thinking and dedication to diverse artistic expression.

RANDALL ROSENBAUM

EXECUTIVE DIRECTOR, RHODE ISLAND STATE COUNCIL ON THE ARTS

Randall Rosenbaum has been executive director of the Rhode Island State Council on the Arts since 1995. From 1984 to January 1995, Rosenbaum served in a variety of capacities at the Pennsylvania Council on the Arts, including deputy director and director of the Dance and Presenting Organizations programs. He has a bachelor of music education from Temple University in Philadelphia, and has managed orchestras and nonprofit arts organizations in Florida, Georgia, North Carolina and Ohio. Rosenbaum has served as a site visitor and panelist for the National Endowment for the Arts in the Dance, Theatre, Music, Musical Theatre/Opera and State & Regional programs, and as a panelist for the state arts agencies of New York, New Jersey, Maryland, Tennessee, Connecticut, Massachusetts and Vermont, as well as for the Mid Atlantic Arts Foundation, the Heinz Endowment of Pittsburgh, and Cuyahoga Arts & Culture in Cleveland, Ohio. Rosenbaum has taught arts administration courses, classes and seminars at Brown University and Rhode Island College. He serves on the boards of the New England Foundation for the Arts and the National Assembly of State Arts Agencies. A practicing musician, Rosenbaum has sung professionally in churches and synagogues, and with performing ensembles throughout the East Coast.



PREVIOUS GARY YOUNG AWARD RECIPIENTS

2014 Rich Boyd, Tennessee	2006 Robert Booker, Arizona	2001 James Backas, Maryland	1995 Mary Hays, New York
2012 Christine D'Arcy, Oregon	2005 Philip Horn, Pennsylvania	2000 Betty Price, Oklahoma	1994 Wayne Lawson, Ohio
2010 Arlynn (Arni) Fishbaugh, Montana	2004 Dennis Holub, South Dakota	1999 Peggy Baggett, Virginia	1993 Alden C. Wilson, Maine
2008 Suzette Surkamer, South Carolina	2003 Barbara Fulton Moran, New Jersey	1998 Al Head, Alabama	1992 David Nelson, Montana
2007 David Fraher, Minnesota	2002 John Paul Batiste, Texas	1997 Bennett Tarleton, Tennessee	1991 Mary Regan, North Carolina
		1996 Shelley Cohn, Arizona	



NATIONAL ASSEMBLY OF STATE ARTS AGENCIES

DISTINGUISHED PUBLIC SERVICE AWARD

This award honors a chair or council member whose outstanding service, creative thinking and leadership significantly impact public support for the arts in his/her state and across the country.

BRUCE RICHARDSON

FORMER CHAIR, WYOMING ARTS COUNCIL



An arts advocate and teacher, Bruce Richardson (Ph.D., English, U.C.L.A., 1983) believes that advocacy is something you do all the time, “a way of living meaningfully by practicing and promoting what you value.” Since arriving in Wyoming in 1984, he has advocated for the arts as a board member and chair of the Wyoming Arts Council, board member and officer of the National Assembly of State Arts Agencies, president of the Nicolaysen Art Museum, vice president of ARTCORE, president of the Wyoming Council for the Humanities, advisor to arts organizations, and organizer and participant in many arts events. Richardson was active in successful efforts to increase the budget for the Wyoming Arts Council and to add the arts to a statewide scholarship program. He is currently a board member of The Wyoming Arts Alliance, an arts advocacy organization. Called “Wyoming’s arts ambassador,” Richardson, in 80 essays and some 200 speeches, has detailed the value and extent of the arts in Wyoming and ways to make things better. For these efforts he received the Governor’s Arts Award in 2014 and was named Casper Citizen of the Year in 2015. Recently retired, Richardson taught for 31 years at the University of Wyoming at Casper. Classes included Shakespeare, Chaucer, horror literature, and living Wyoming writers and artists. In 2015 he received the University of Wyoming’s highest teaching honor, the Ellbogen Lifetime Teaching Award.

PREVIOUS DISTINGUISHED PUBLIC SERVICE AWARD RECIPIENTS

- 2014** Bobby Kadis, North Carolina
- 2012** Dorothy Pierce McSweeney, District of Columbia
- 2010** Lucius (Lu) Ellsworth, Virginia
- 2008** Margaret “Peggy” Kannenstine, Vermont
- 2007** David “White Thunder” Trottier, North Dakota
- 2006** Delores C. Fery, Idaho
- 2005** Margaret “Tog” Newman, North Carolina
- 2004** William Davis, West Virginia
- 2003** Judith Ann Rapanos, Michigan
- 2002** Dr. Oscar E. Remick, Michigan, Pennsylvania & New York
- 2001** Barbara S. Robinson, Ohio
- 2000** Carol Brown, Pennsylvania

2016 NATIONAL AWARDS TASK FORCE

CHAIR:

- SANDY SHAUGHNESSY, Director, Florida
- ROBERT BOOKER, Executive Director, Arizona
- DONNA COLLINS, Executive Director, Ohio
- ARNI FISHBAUGH, Executive Director, Montana
- GARBO HEARNE, Former Chair, Arkansas
- BOBBY KADIS, Former Chair, North Carolina
- MICHAEL LANGE, Executive Director, Wyoming
- JOHN STRICKLAND, Council Member, West Virginia

Thank You!

NASAA gratefully acknowledges the support of our generous donors. Your gifts support our advocacy, research, leadership training, and other programs and services that strengthen state arts agencies. Thanks!

\$75,000+

Michigan Economic
Development Corporation¹

\$25,000 - \$30,000

Daniel & Pamela DeVos
Foundation¹
Michigan Council for Arts &
Cultural Affairs¹
Utah Department of
Heritage & Arts¹
Utah Division of Arts & Museums¹
Windgate Charitable Foundation³

\$10,000 - \$19,999

Frey Foundation¹
Meijer, Inc.¹

\$5,000 - \$9,999

Dick & Betsy DeVos Foundation¹
Martha S. MacDonell¹⁰
Robinson Family Philanthropic
Fund of the Jewish
Federation of Cleveland¹⁰
Nola Ruth⁶

\$1,000 - \$4,999

Steve Bailey¹
Lona A. Barrick⁵
Thomas L. Birch³
Patricia Bizzell⁶
The Daniel Foundation
of Alabama⁴
Camellia El-Antably⁵
Experience Grand Rapids¹
Todd P. Lowe^{* 8}
Clement Alexander Price^{+ 2}
Jeff Rich⁶
Ted & Erika Spyropoulos
Foundation¹
Diane P. Stewart⁵
Maynard C. Smith
Construction Company, Inc.⁵
John* and Pat Strickland⁵
Ginger Warner⁸
James A. West, Jr.³

\$500 - \$999

Americans for the Arts¹
Max Armentrout⁴
ArtPrize¹
Mr. and Mrs. William Branstrom³
Stephanie B. Conner^{* 6}
Dee and John Fery⁹
Gary Gibbs^{* 8}

Bobby Kadis¹¹
Kay Kendall²
Susan S. Landis¹²
Stephanie Metz O'Keefe¹
Chris and Amy Panzarella¹
Bruce Richardson¹⁰
Aby Rosen³
Laura S. Smith¹³
Carol Trawick⁵

\$250 - \$499

Anonymous⁶
Kelly Barsdate⁶
Sharon Beshore⁴
Pam Breau¹⁰
Mary Campbell-Zopf⁴
Tom and Lisa Cordingley³
Michael Donovan⁴
Michael Faison⁸
David J. Fraher¹¹
Sue Gens⁵
Virginia Gowski³
Julie Henahan⁶
Henry Horowitz²
Dr. Beth Klingenstein³
Antzee Magruder¹
Wayne Martin²
Ken May^{* 7}
Sylvia Prickett⁴
Mary Regan⁸
Lewis* and Maggie Ricci⁴
Randall Rosenbaum^{* 9}
Scott Shanklin-Peterson⁵
Marcia Neuhaus Speck³
Charles V. Stanhope⁵
Susan Steinhauer and
Daniel Greenberg⁶
Suzette Surkamer¹³
Julie S. Vigeland⁴
Stuart Weiser³

\$100 - \$249

Citizens for Florida Arts, Inc.¹
Michael Alexander and
Victoria Kirsch⁶
Cyndy Andrus^{* 3}
Julia I. Arger³
Rita and Mike Basom⁸
Gay Bechtelheimer¹
Bassem Bejjani²
Lee and Jacqueline Berry⁴
Barbara Bershon⁵
Robert Booker¹⁵
Susan Boskoff⁷
Bill and Ruth Botzow⁸
John Bracey⁶

David W. Briggs⁷
Dr. Roger C. Brooks⁶
Benjamin Brown^{* 8}
Maren Brown⁴
Patty A. and Robert W. Bryant⁵
Peggy Burnet¹
Patsy White Camp⁴
Michael J. Charron⁵
Nicolette B. and Peter Clarke¹¹
Robert B. Clasen⁵
Maria E. Cole³
Donna Collins³
Theresa Colvin⁷
Gerri Combs¹¹
Nancy Cooper²
Alan W. Cooper³
Mary Michael Corbett⁴
Jo Crandall⁹
Chris D'Arcy⁶
Sherry Davis⁴
Lillian Demas¹
Laura Diddle and Brian Hildebrandt¹
Gretchen Dow Simpson¹
Mr. & Mrs. Scott Duhamel¹
Don Ehman⁴
Karen Ellerbrook⁵
Lu Ellsworth¹³
Dawn E. Enochs⁶
Loie Fecteau^{* 8}
Mark Feldman²
Robert M. Fitzgerald¹
William G. Francis¹⁴
Jeffrey W. Gabel²
Christian Gaines¹
Tatiana Gant¹
Irwin Gelber¹
Sara Lee Gibb¹⁰
Steve Gibbs¹
Monica Guzman^{* 3}
Karen Hanan²
Gay Hanna¹
Nancy Harbour⁷
M. Susan Hardwick⁴
Kay Hardy⁴
Matthew Harris^{* 1}
Dr. Sarah Lynn Hayes⁵
Al Head⁶
Garbo Hearne^{* 3}
Candy and Tom Henning²
Cathy Hernandez⁴
Waymon L. Hickman¹
Lynnette Hiskey¹
Jo Hodgkin¹
Frank Hodsoll^{* 1}
Cinda Holt⁴
Philip Horn⁷
Margaret Hunt^{* 6}

Susan Jacklin⁵
Ira J. Jackson, III¹
Julie J. Jacobson⁶
Muriel P. Johnson⁶
Benjamin Joseph¹
Jackie Kahle and Michael
Dell'Orto⁷
Lonny Kaneko²
Dennis Kavanaugh¹²
Mary Kennedy³
Lynn Kessler⁹
George Koch⁶
Ralph Kuebler¹
Carleen Layne²
Dr. Randall and Kelly Lengeling⁴
Deanna B. Lien²
Reeve Lindbergh²
Julia Lowell⁶
Robert L. Lynch³
Shirley Madigan¹
Betty L. Mahoney⁶
Bill Mandicott⁷
Mike Markey²
Diane Martindale¹
Mary McLaughlin¹
Jim Bob McMillan¹
Lori Meadows⁷
Michael Pangburn⁵
Karen L. Paty^{* 5}
Dr. Tom Pearson²
Paula Mitchell Pflueger²
Betty Plumb⁴
Anne B. Pope³
Charles and Bernice Price¹¹
Billye Proctor Shaw⁸
Rebecca T. Quinn⁵
Judith Ann Rapanos⁶
Hannah Robson¹
Jacques G. Rodrigue¹
Mrs. Carol S. Rothschild⁵
W. Omari Rush¹
Barbara Saromines-Ganne³
Thomas H. Sayre⁷
Mary Margaret Schoenfeld^{* 6}
J. Barry Schrenk²
Sandy Shaughnessy^{* 8}
Libby Slader²
C. Russell Sox⁴
Karen Stewart⁴
Nancy P. Stewart¹
Richard Q. Stifel⁴
Josie Stiles¹
Phyllis J. Stough³
Beverly Strohmeier⁵
Robin Tryloff¹
Margaret Vanderhye³
Ken Verdoia³

Richard J. Vierk⁵
 Gary Vikan²
 Rosa Lee Vitez-Hall⁴
 Sherman Warner³
 Malcolm White¹
 John W. Willingham⁴
 Suzanne Wise⁹
 Irma Varela Wynants¹
 Neal Zimmers¹

\$50 - \$99

Oklahomans for the Arts¹
 Tim and Lisa Alderman³
 Rex Alexander¹
 Ashley Allen¹
 Hon. Carolyn S. Allen²
 Brad Bachmeier¹
 Dr. Sonya G. Baker and
 Mr. Michael J. Fazio⁴
 Diane M. Borgman¹
 Carmen Boston⁵
 Marian Boyd²
 Jean B. Boyer Cowling⁶
 Ms. Shawn Brevard⁴
 Dale W. Brock²
 Carol R. Brown¹¹
 Myrna Colley-Lee⁵
 Jaime Dempsey⁶
 Patricia and Dennis Dewey⁷
 Marilyn H. Dore²
 Zon Eastes²
 Michael C. Echols¹
 Barbara Edwards⁴
 Charles G. Ellis¹
 Arlynn Fishbaugh¹¹
 Kathleen Gallegos¹
 E. Jeanne Gleason²
 Julie Hale²
 Linda Lowes Hatchel⁴
 Mark and Lynn Hofflund¹²
 Susan C. Hogan⁴
 Peter Jasso¹
 Fritz Jellinghaus³
 Marie Junaluska⁴
 Mary Kelley⁶
 Maria Kompare²
 Michael Lange²
 Judy Langley⁶
 Wayne P. Lawson²
 Liza B. Lewis⁴
 Renee Margoce³
 Sherry McClymont²
 Dorothy Pierce McSweeney¹¹
 Josie Mendoza²
 Jan Mittleider²
 Lise Monty⁵
 Mrs. H. Taylor Morrisette⁴
 Cynthia A. Murray-Beliveau⁵
 Lisa Myers¹
 Robert Nefsky²
 Patti Nelson¹
 Susan Oetgen¹
 Sandra Oxx³
 Rhoda A. Pierce⁹
 Connie Pirtle³

Mollie Quinlan-Hayes⁵
 Josephine D'Amato Richardson³
 Lisa Robb⁶
 Virginia Sanders¹
 Dr. and Mrs. Ron Schwartz¹
 Patt and Stephen Sharp¹
 Dora Shick³
 Marty Skomal⁷
 David Slatery³
 Scott Stoner¹
 Jack Thompson¹
 Dr. Louise Toppin⁴
 Libby Unthank Tower¹
 Janice C. Travis²
 Nancy Trovillion²
 An-Ming Truxes⁵
 Kris Tucker⁶
 William F. Tull¹
 Randall Vaughn³
 Reuben A. Vessup¹
 Lana Gold Walder⁶
 Jim Walker and Jerry Oligmueller¹
 Joseph Mack Wathen²

\$1 - \$49

Nathan Alder¹
 Rita Baca²
 Marsha C. Bjornn¹
 Jason P. Bowcutt²
 Paddy Bowman¹
 Andrew Buchholz¹
 Allison Cowan-Sarmo²
 Paul and Joyce Dennison²
 Laura Forbes¹
 Ralph Frohsin, Jr.⁹
 Allie Goolrick¹
 Marie Hunter²
 Sheri Jarvis¹
 Mary Donnet Johnson¹
 Elaine Woods Johnson³
 Patrick Kelsey²
 Phyllis Kennedy¹
 Darryl D. Mehaffie¹
 MaryAnn Miller¹
 Shelley Cole Morhaim⁴
 Julianne Morse¹
 Jon Newsom¹
 Catherine O'Brian¹
 Edward C. Oliver⁴
 Sheela Burke Plater²
 Steve Runk⁶
 Terri B. Salazar⁴
 Kathleen T. Setterman²
 Amber Sharples¹
 Janice A. Taylor⁶
 Carol Templeton³
 Ardath Weaver²
 Joan White¹
 Mr. and Mrs. Samuel A. Winans⁵

GIFTS MADE IN HONOR

- In honor of the Arkansas Arts Council board and staff, made by Antzee Magruder
- In honor of Pam Breau, made by Virginia Gowski
- In honor of Pam Breau, made by Cathy Hernandez
- In honor of Pam Breau, made by Philip Horn
- In honor of Pam Breau, made by Bobby Kadis
- In honor of Pam Breau, made by Jeff Rich
- In honor of Pam Breau, made by Suzette Surkamer
- In honor of Pam Breau, made by An-Ming Truxes
- In honor of Benjamin Brown, made by Sarah Lynn Hayes
- In honor of Mary Campbell-Zopf, made by the board of the Ohio Arts Council
- In honor of Theresa Colvin, made by Shelley Morhaim
- In honor of Stephanie Conner, Chair of the Tennessee Arts Commission, made by Waymon L. Hickman
- In honor of Shannon Daut, made by Chris D'Arcy
- In honor of Loie Fecteau, made by Nancy Cooper and Curtis Porter
- In honor of Arni Fishbaugh, made by Rita and Mike Basom
- In honor of Arni Fishbaugh, made by Pam Breau
- In honor of Arni Fishbaugh upon her coming retirement from the Montana Arts Council, made by Bruce Richardson
- In honor of Julie Henahan, made by the board of the Ohio Arts Council
- In honor of Peter Homans and Chad Wilson, made by Allie Goolrick
- In honor of Philip Horn, made by E. Jeanne Gleason
- In honor of Margaret Hunt, made by Chris D'Arcy
- In honor of Susan S. Landis, made by Susan C. Hogan
- In honor of Susan S. Landis, made by John and Pat Strickland
- In honor of Bill Mandicott for his dedication and service, made by Barbara Bershon
- In honor of the Maryland State Arts Council staff, made by Theresa Colvin
- In honor of Ken May, made by Rusty Sox
- In honor of the Missouri Arts Council staff, made by Marie Hunter
- In honor of the NASAA staff, made by Anne B. Pope
- In honor of the NASAA staff, made by Lisa Robb
- In honor of the Ohio Arts Council board and staff, made by Donna Collins
- In honor of Rebecca T. Quinn, made by Elaine W. Johnson
- In honor of Nola Ruth's leadership with the Missouri Arts Council, made by Marie Hunter
- In honor of Laura Smith, made by Patricia Bizzell
- In honor of Carol Trawick, made by Barbara Bershon
- In honor of Carol Trawick, made by Shelley Morhaim
- In honor of George Tzougros, Kevin Miller, and the Wisconsin Arts Board, made by Pam Breau
- In recognition of Theresa Colvin, Executive Director, and all the staff of the Maryland State Arts Council, made by Bill Mandicott

This list acknowledges 2015 and 2016 contributions. The number after each name identifies the number of years giving, and the categories reflect the most recent level of giving. If you would like to join this list or report any corrections, please contact Laura Smith at 202-347-6352 x120.

(* 2016 NASAA board member; + deceased)

FROM THE PRESIDENT

Dear Friends,

It's wonderful to see you here in Grand Rapids!

When we gather for NASAA meetings, we get to step out of our daily lives and come together – to learn, laugh, explore and share stories (good, bad and ugly). We work with so many people every day, but here, we connect with those who truly understand what we do: each other.



NASAA is our professional community – always here for us with **information and service that counts**. More than ever, I'm grateful to have a service organization dedicated *exclusively* to us.

That's why I give personally to NASAA – to ensure that my agency and all state arts agencies continue to get the best support 24/7/365.

If you haven't already, please consider making a gift while you're here. These are just a few great reasons to support NASAA:

- Because we can – and do – call NASAA at any time, for any reason, and get **fast, customized, in-depth help**;
- Because NASAA – and *only* NASAA – represents our interests in Congress and **safeguards the 40%** of National Endowment for the Arts funds that go to states and regions;
- Because NASAA helps us **foster the networks and relationships that sustain us**. The professional community we develop through NASAA is a source of knowledge, inspiration, moral support and lifelong friendships.

If you find yourself inspired or energized during NASAA Assembly 2016 – and I know you will! – please put that energy into action on behalf of everyone here, and on behalf of the arts all across our country.

You can make your gift at the registration desk, on-line at www.nasaa-arts.org or by scanning the QR code at the bottom of this page.

Your generosity strengthens us all. **Thank you!**

A handwritten signature in black ink that reads "Gary".

Gary Gibbs, Ph.D.
Executive Director, Texas Commission on the Arts
President, NASAA



Donate Now

SPONSORS & ACKNOWLEDGMENTS



SPECIAL THANKS

ArtPrize
Experience Grand Rapids
Grand Rapids Civic Theatre
University of Michigan School of Music, Theater and Dance
Urban Institute for Contemporary Arts
West Michigan Center for Arts & Technology

State Arts Action Network participation in selected NASAA Assembly 2016 events is made possible by Americans for the Arts.

Additional support for arts education managers and folk arts coordinators is provided by the National Endowment for the Arts and administered by NASAA.

The work of NASAA and state arts agencies is strengthened in many ways through partnership with the National Endowment for the Arts.

BOARD AND STAFF

NASAA

2016 Board of Directors

PRESIDENT

Gary Gibbs
Executive Director
Texas Commission on the Arts

1ST VICE PRESIDENT

Benjamin Brown
Chair
Alaska State Council
on the Arts

2ND VICE PRESIDENT

Loie Fecteau
Executive Director
New Mexico Arts

TREASURER

Todd Lowe
Council Member
Kentucky Arts Council

SECRETARY

Suzanne Wise
Executive Director
Nebraska Arts Council

DIRECTORS

Alex Aldrich
Executive Director
Vermont Arts Council

Cyndy Andrus
Chair
Montana Arts Council

Stephanie Conner
Commissioner
Tennessee Arts Commission

Monica Guzman
Former Chair
Guam Council on the
Arts & Humanities Agency

Matthew Harris
Division Administrator
Iowa Arts Council

Garbo Hearne
Former Chair
Arkansas Arts Council

Margaret Hunt
Director
Colorado Creative Industries

Ken May
Executive Director
South Carolina
Arts Commission

Karen Paty
Executive Director
Georgia Council for the Arts

Lewis Ricci
Executive Director
Indiana Arts Commission

Randall Rosenbaum
Executive Director
Rhode Island State Council
on the Arts

Omari Rush
Council Member
Michigan Council for
Arts & Cultural Affairs

Nola Ruth
Chair
Missouri Arts Council

Sandy Shaughnessy
Division Director
Florida Division of
Cultural Affairs

John Strickland
Council Member
West Virginia Commission
on the Arts

ADVISORY MEMBER

Mary Margaret Schoenfeld
National Coordinator
U.S. Regional Arts Organizations

NASAA *Staff*

Pam Breaux
Chief Executive Officer

Kelly J. Barsdate
Chief Program and
Planning Officer

Laura S. Smith, CFRE
Chief Advancement Officer

Isaac Brown
Legislative Counsel

Jessica Galvano
Executive Associate

Eric Giles
Learning Services Manager

Kelly Liu
Grants Data Associate

Joelle Luongo
Program Assistant,
National Arts and Humanities
Youth Program Awards

Patricia Mullaney-Loss
Research Associate

Susan Oetgen
Professional Development
Institute Manager

Paul Pietsch
Research Manager

Sylvia Prickett
Director of Administration

Traci Slater-Rigaud
Director of National Arts and
Humanities Youth
Program Awards

Sue Struve
Communications Manager

Ryan Stubbs
Research Director

MICHIGAN COUNCIL FOR ARTS & CULTURAL AFFAIRS *Council Members*

Andrew Buchholz, Chairman
Traverse City

Elizabeth Ahrens
Harbor Springs

Ritch Branstrom
Rapid River

Frederick Davies
Jackson

Lilian Demas
Bruce Township

Pamella DeVos
Ada

Aaron Dworkin
Ann Arbor

Christian Gaines
Grand Rapids

Susannah Goodman
Detroit

Rich Homberg
Bloomfield Hills

Michael Kasper
Dowagiac

W. Omari Rush
Ann Arbor

Carol Snapp
Kalamazoo

Shannon White
Fenton

MICHIGAN COUNCIL FOR ARTS & CULTURAL AFFAIRS *Staff*

John Bracey
Executive Director

Chad Badgero
Arts Education Program
Manager

Sue Carlson
Program and Financial Analyst

Jeff Garrett
Community Development
Program Manager

Taylor Rupp
Analyst

Alison Watson
Programs Manager

Adam Wheeler
Program Analyst

Hailey Owens
Summer Intern



**PORTLAND WELCOMES THE
NASAA 2017 Leadership Institute**

travel
PORTLAND



SAVE THE DATE: NASAA 2017 Leadership Institute

October 11 – 13, 2017
Portland, Oregon

**National Assembly of
State Arts Agencies**

KNOWLEDGE ★ REPRESENTATION ★ COMMUNITY

1200 18th Street NW, Suite 1100 | Washington, D.C. 20036
phone 202-347-6352 | fax 202-737-0526 | TDD 202-296-0567
nasaa@nasaa-arts.org

WWW.NASAA-ARTS.ORG

Program design and layout by Insight180