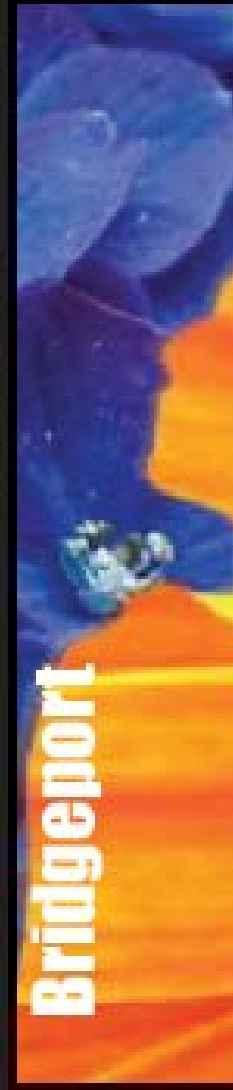
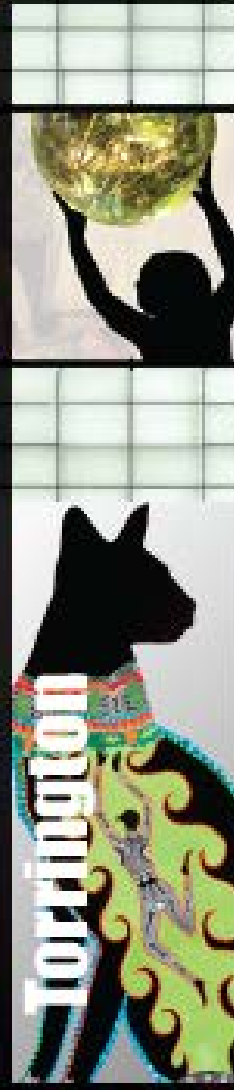




arts  
catalyze  
placemaking

# The City Canvas Initiative



**Creative placemaking in seven places**



Adam Niklewicz-  
Hartford





# The Hunters- Waterbury



# The Gateway Community College "Electroland" Installation- New Haven



# Jan Cummings & Peter Good- New London



# Sol LeWitt- New Britain



Produced by Jesse Good





Glow. Reflect. Project.

# LAMP

Light Artists Making Places

The "Ripple Effect" of  
placemaking- New Haven



The Stamford School of Ballet  
located in the Stamford Innovation Center

# Project Storefronts-New Haven



**BEFORE**  
**July 2011**



**AFTER**  
**May 2012**

The Grove- New Haven's most successful co-work space has now begun mentoring their small business and innovation centered model in other communities.



## Small Business of the Year

Awarded by Business New Haven

**"From The Grove flows a river of innovation and collaboration."**

**- Business New Haven**

New Haven's coworking community. Come collaborate, innovate, and connect with our diverse community of entrepreneurs, nonprofits, and change agents.

[Learn More](#) ➔

### Imagining the future, shaping today

**A**t the Grove we aim to position people, organizations, businesses, and communities for their effective future. The

### What's Happening @ The Grove

➤ **New Haven and The Grove featured in FastCompany's United States of Innovation!**

Providing opportunities grow into new,  
creative industry and manufacturing  
jobs.



Mapping of Statewide Space Re-use Opportunities  
"Ground level retail will completely change in the coming years, that's exciting for new ideas and old spaces."

← → ↺ 🏠 www.yoursqft.com

📧 Gmail - Inbox (11456... 📅 Google Calendar 🗞 The New York Time... 📰 Breaking News and ... 📰 washingtonpost.co... 🌐 Login | Facebook 📺 YouTube - Broadcas... 📺 TUBE+ Watch full le... ⌵ Other bookmarks

**SQFT** [+1](#) [Like](#) [Tweet](#) [Blog](#) [About](#) [Get Involved](#)

*Making Connections*

*Ground level retail will completely change in the coming years, that's exciting for new ideas and old spaces.*

**Idle Spaces**

**Idle Workforce**

**Business Growth**

**Pop-up City**

**Communities in Transition**

**Online Commerce**

*Your Pop-Up Corridor*



# BEYOND BORDERS

10 self-taught artists

Gayleen Aiken Vito Bonanno  
Genevieve Burnett Tarik Eccols  
Ken Grimes Ricky Hagedorn  
Andy Lacouture Kerri Quirk  
Linda St. John John Sembrakis

Regional artists residencies in rural towns and outlying urban centers- Torrington



# i-Quilt- It's all about creative connections- Hartford



Artists' light projections invigorate our downtown economies creating a sense of safety and celebration- Bridgeport



Connecticut   
*still revolutionary*