



2019

NASAA

Leadership Institute

SEPTEMBER 18-20
PROVIDENCE, RHODE ISLAND



Hosted by the Rhode Island State Council on the Arts



Welcome to Rhode Island for the
National Assembly of State Arts
Agencies Leadership Institute.

We hope you enjoy your time in
Providence, the Creative Capital.

U.S. Senator Jack Reed
U.S. Senator Sheldon Whitehouse
Congressman Jim Langevin
Congressman David Cicilline

Paid for by The Reed Committee, Whitehouse for Senate,
Langevin for Congress, and The Cicilline Committee.

Welcome to Providence, Rhode Island!

Dear friends and colleagues:

Welcome to our Creative Capital! The Rhode Island State Council on the Arts (RISCA) is delighted to have the NASAA family here in Providence, Rhode Island. We are the smallest state, but by the end of your visit I'm sure you'll agree that our level of hospitality, our historical and cultural amenities, and our world-class culinary goodness are equal to anything you've experienced, at home or abroad.

During the NASAA 2019 Leadership Institute we hope to give you a taste of all that Rhode Island has to offer. We've invited some exciting artists to perform during receptions and events, and we encourage you to get out of the hotel and about town to experience our stimulating public art and gallery scene. You'll discover that Providence is a very walkable city. Events taking place during the conference include Gallery Night Providence, on Thursday evening – which is a free “dinner on your own” evening – and Design Week RI, with events happening throughout the community.

The Providence Leadership Institute highlights strategic partnerships, and one of RISCA's most recent efforts is our collaboration with the Rhode Island Department of Health. This partnership has resulted in the development of a State Arts & Health Plan, the first in the nation, which outlines policy, practice, and research recommendations for advancing the integration of arts and health in our state. This initiative, funded in part by The Rhode Island Foundation and ArtPlace America, will have its official rollout at the conclusion of the Leadership Institute – but you can learn more about this collaboration at an Institute session on Friday.

For now, welcome to Providence! Sit back and enjoy all the Ocean State has to offer.

Sincerely,

Randall Rosenbaum
Executive Director

Libby Slader
Chair



Randall Rosenbaum



Libby Slader



TABLE OF CONTENTS

Welcome to Providence!
PAGE 3

Hotel Floor Plan
PAGE 5

Schedule at a Glance
PAGE 6

Sessions & Events
PAGE 8

General Information
PAGE 15

Sponsors &
Acknowledgments
PAGE 16

From the Development
Committee Chair
PAGE 17

Thank You!
PAGE 18

Board & Staff
PAGE 20

Use a QR code scanner on your smartphone or tablet to access more information about NASAA 2019 Leadership Institute sessions, speakers and artists. This tech tool conserves paper – good news for the planet and for NASAA’s budget. If you don’t have a QR reader, visit your app store for options.



AGENDA & SESSIONS



SPEAKER BIOS



RISD MUSEUM



PEER SESSIONS & AGENDAS



FEATURED SPEAKERS & ARTISTS

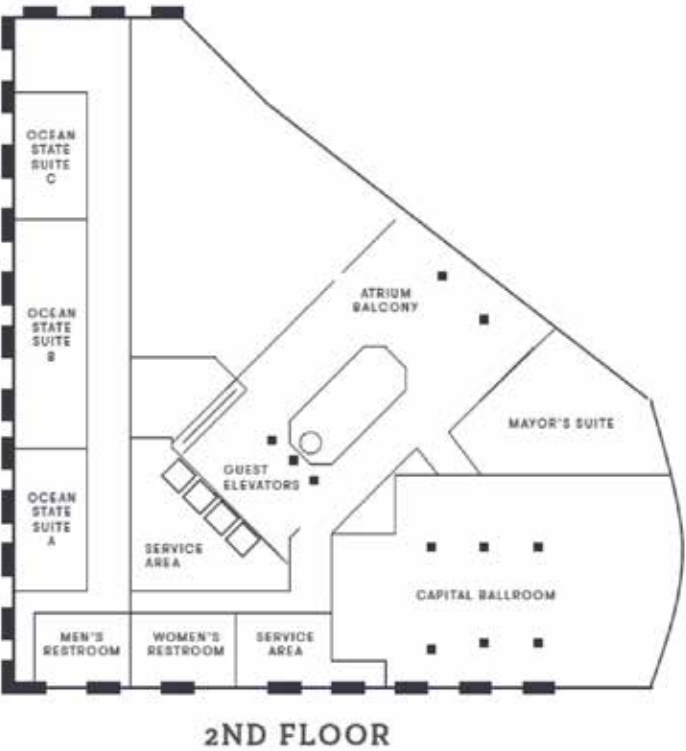


JOIN THE CONVERSATION

FLOOR PLAN

Graduate Providence Hotel

11 Dorrance Street, Providence, Rhode Island 02903



Find grants and resources
that support your work
on NEFA.org



New England States Touring (NEST) Grant-supported FirstWorks presents Debo Band in Providence, RI; Photo by Koki

SCHEDULE AT A GLANCE



Access NASAA 2019 Leadership Institute details at conferences.nasaa-arts.org

WEDNESDAY, SEPTEMBER 18

1:30 – 3:00 P.M.

NASAA Board of Directors Meeting

Capital Ballroom, 2nd Floor

Members invited.

6:00 – 8:00 P.M.

Opening Reception

Rhode Island School of Design Museum

20 North Main Street

Providence, Rhode Island 02903

401-454-6500

Shuttles depart hotel beginning at 5:40 p.m. Shuttles depart museum beginning at 8:00 p.m.



THURSDAY, SEPTEMBER 19

7:00 – 8:30 A.M.

Breakfast

Capital Ballroom, 2nd Floor

9:00 – 10:30 A.M.

Welcome Plenary & Roll Call of the States

Biltmore Ballroom, 17th Floor

11:00 A.M. – 12:30 P.M.

Peer Sessions

Chairs and Council Members

L'Apogee A & B, 17th Floor

Executive Directors

Summit A, B & C, 18th Floor

Deputy/Assistant Directors

Narragansett Bayview, 17th Floor

12:30 – 1:30 P.M.

Networking Luncheon

Capital Ballroom, 2nd Floor

1:45 – 2:45 P.M.

Plenary: How Grant Makers Can Encourage Diversity, Equity and Inclusion

Biltmore Ballroom, 17th Floor

3:00 – 5:00 P.M.

Equity in the Panel Room Training

Chairs and Council Members

L'Apogee A & B, 17th Floor

Executive Directors

Summit A, B & C, 18th Floor

Deputy/Assistant Directors

Narragansett Bayview, 17th Floor

6:00 – 7:30 P.M.

Donor Reception

Parkview Terrace, 3rd Floor

(In the event of rain: Capital Ballroom, 2nd Floor)

EVENING

Dinner on your own / Gallery Night Providence

FRIDAY, SEPTEMBER 20

8:00 – 9:00 A.M.

Breakfast

Capital Ballroom, 2nd Floor

9:15 – 9:45 A.M.

National Endowment for the Arts Plenary

Biltmore Ballroom, 17th Floor

9:45 – 10:15 A.M.

Plenary: How Alaska Came Back

Biltmore Ballroom, 17th Floor

10:30 A.M. – 12:30 P.M.

Leadership Training Workshops

Mindfulness for Leadership

L'Apogee A & B, 17th Floor

Inclusive Leadership

Narragansett Bayview, 17th Floor

No Advocacy Group? Let's Talk!

Summit A, B & C, 18th Floor

12:30 – 1:30 P.M.

Networking Luncheon

Capital Ballroom, 2nd Floor

1:30 – 3:00 P.M.

Strategic Partnership Sessions

Partnering for Public Health:

Rhode Island Arts and Health Network

L'Apogee A & B, 17th Floor

Collaboration in Creative Aging

Narragansett Bayview, 17th Floor

Economically Sound: Creating Partnerships

for Economic Development

Ocean State Suite B, 2nd Floor

What's Next for the National Endowment

for the Arts Partnerships Program?

Summit A, B & C, 18th Floor

3:30 – 5:00 P.M.

Closing Plenary

Biltmore Ballroom, 17th Floor



SESSIONS & EVENTS

Access NASAA 2019 Leadership Institute details at conferences.nasaa-arts.org

WEDNESDAY, SEPTEMBER 18

1:30 – 3:00 P.M.

NASAA Board of Directors Meeting

Capital Ballroom, 2nd Floor

State arts agency staff and council members are invited to attend.



Cesare Santana

6:00 – 8:00 P.M.

Opening Reception

Rhode Island School of Design Museum
20 North Main Street
Providence,
Rhode Island 02903
401-454-6500

The Rhode Island School of Design (RISD) curates works of art representing diverse cultures from ancient times to the present. Exhibits celebrate makers of all kinds, from fashion designed by Alexander McQueen to etchings by Whistler to Gorham silver. The evening is a grand kickoff to the Leadership Institute in the centerpiece gallery of the RISD collection. Participants have access to most of the museum's galleries. Dominican singer-songwriter **Cesare Santana** entertains with music inspired by Latin, blues and Brazilian rhythms.

Shuttles depart the Graduate Providence hotel's Dorrance Street entrance beginning at 5:40 p.m. Shuttles depart the museum's Chace Center entrance, at 20 North Main Street, beginning at 8:00 p.m.

THURSDAY, SEPTEMBER 19

7:00 – 8:30 A.M.

Breakfast

Capital Ballroom, 2nd Floor

9:00 – 10:30 A.M.

Welcome Plenary & Roll Call of the States

Biltmore Ballroom, 17th Floor

Join your colleagues in a NASAA tradition, the annual roll call of the states and jurisdictions! In addition to a welcome from our Leadership Institute host, the Rhode Island State Council on the Arts, and a special blessing by Narragansett Elder **Dawn Dove**, Conference Artist-in-Residence **Vatic Kuumba** performs to help launch our meeting.



Dawn Dove



Vatic Kuumba

11:00 A.M. – 12:30 P.M.

Peer Sessions

Join your peers to network and exchange ideas in discussions developed and led by volunteer members.

Chairs and Council Members

L'Apogee A & B, 17th Floor

Executive Directors

Summit A, B & C, 18th Floor

Deputy/Assistant Directors

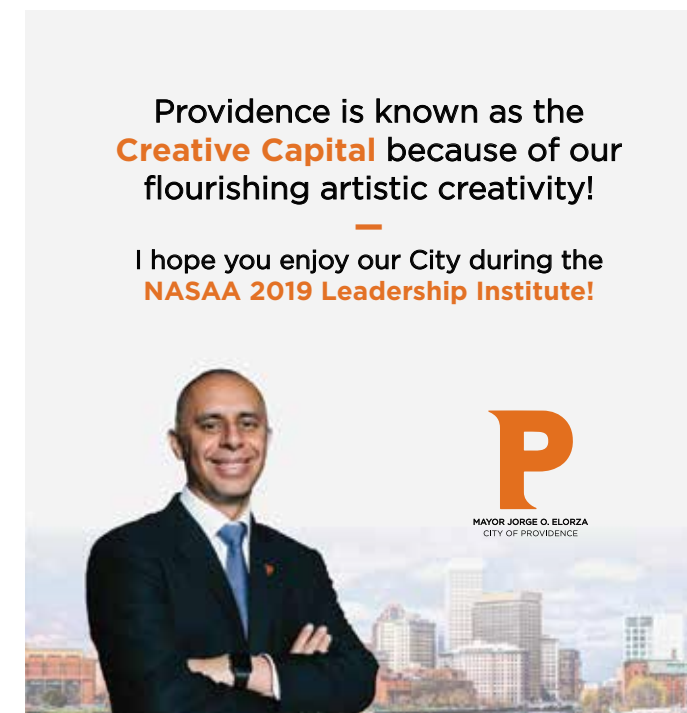
Narragansett Bayview, 17th Floor

NASAA 2019 Leadership Institute peer sessions are sponsored by Mid-America Arts Alliance.

12:30 – 1:30 P.M.

Networking Luncheon

Capital Ballroom, 2nd Floor



1:45 – 2:45 P.M.

Plenary: How Grant Makers Can Encourage Diversity, Equity and Inclusion

Biltmore Ballroom, 17th Floor

Georgia Council for the Arts Executive Director **Karen Paty** moderates a dialogue with Grantmakers in the Arts President & CEO **Eddie Torres** and Boston University Associate Provost for Diversity and Inclusion **Crystal Williams** exploring how grant makers can lead diversity, equity and inclusion efforts. Topics include strategies for lifting the work necessary to root grant-making practices in DEI, building internal and external coalitions of support, and using communication strategies that embrace broad participation and drive change.



Karen Paty



Eddie Torres



Crystal Williams

(continued)

SESSIONS & EVENTS

THURSDAY, SEPTEMBER 19

3:00 – 5:00 P.M.

Equity in the Panel Room Training

Reconvene with your peer groups to examine your role in leading your agency toward greater equity in grant making. Skilled facilitators lead you through a dialogue designed to help you short-circuit implicit bias in your grant-making processes. You receive practical guidance based on lessons learned from the Equity in the Panel Room initiative. This initiative convened public and private arts funders in a rigorous self-assessment journey designed to enhance the responsiveness, accountability and accessibility of arts funding programs.

Chairs and Council Members

L'Apogee A & B, 17th Floor

Executive Directors

Summit A, B & C, 18th Floor

Deputy/Assistant Directors

Narragansett Bayview, 17th Floor

FACILITATORS:

- Pam Breaux, President and CEO, NASAA
- Moir Brennan, Executive Director, MAP Fund
- Emily Cachapero, Director, Artistic and International Programs, Theatre Communications Group
- Ken May, Former Executive Director, South Carolina Arts Commission
- Jane Preston, Deputy Director, New England Foundation for the Arts
- Crystal Williams, Associate Provost for Diversity and Inclusion, Boston University

6:00 – 7:30 P.M.

Donor Reception

Parkview Terrace, 3rd Floor

(In the event of rain: Capital Ballroom, 2nd Floor)

Mingle with your fellow NASAA supporters to celebrate and enjoy the Ireland-inspired music of **The Exiles**. Indulge in some delicious hors d'oeuvres before heading out into Providence for the rest of the evening. All individual donors and conference supporters are invited.



The Exiles (left to right): Bob Drouin, Russell Gusetti, Torrin Ryan

EVENING

Dinner on your own / Gallery Night Providence

Providence is a food lover's dream, with a variety of restaurants offering cuisine choices from all over the globe. Since this is the third Thursday of the month, Gallery Night Providence will be in full swing. Eighteen of the city's hottest "art spots" open their doors for a visual arts party. You can take a free guided Art Trolley tour or choose your own itinerary, walking or taking a taxi to the galleries of your choice.

FRIDAY, SEPTEMBER 20

8:00 – 9:00 A.M.

Breakfast

Capital Ballroom, 2nd Floor

9:15 – 9:45 A.M.

National Endowment for the Arts Plenary

Biltmore Ballroom, 17th Floor

Join National Endowment for the Arts Chairman Mary Anne Carter for her keynote address on the work of the endowment and her goal to make the agency more accessible to all Americans.



Mary Anne Carter

9:45 – 10:15 A.M.

Plenary: How Alaska Came Back

Biltmore Ballroom, 17th Floor

Alaska State Council on the Arts (ASCA) Chairman **Benjamin Brown** and Executive Director **Andrea Noble** share their experiences of the defunding and triumphant return of the state arts agency. In July we learned of the Alaska governor's line item veto of the full fiscal year 2020 budget for ASCA. In a testament to the power of advocacy, the agency's full budget was restored in August in a supplemental budget bill and left intact by the governor. Hear from our colleagues who navigated deeply troubling waters this summer, and join in saluting their success.



Benjamin Brown (top), Andrea Noble

The most important thing you can do while you're here is to ensure the world will be better when you're not.

One of life's great achievements is the ability to leave a lasting legacy. We can help.



rifoundation.org/legacy
or call (401) 274-4564

SESSIONS & EVENTS

FRIDAY, SEPTEMBER 20

10:30 A.M. – 12:30 P.M.

Leadership Training Workshops

Mindfulness for Leadership

L'Apogee A & B, 17th Floor

The quality of awareness that allows us to see clearly, understand fully and respond appropriately to whatever arises in our work is critical for extraordinary leadership. Thankfully, it is possible to raise the bar on awareness, and enhance decision making under pressure, through the practice of mindfulness. In this workshop, participants will learn practices and techniques, rooted in rigorous research, from renowned experts from the Mindfulness Center at Brown University. This session will be especially valuable for executive directors and deputy directors who often have to make decisions in the moment that can have long-lasting effects.

FACILITATORS:

Brenda Fingold, Assistant Director of Workplace and Leadership Education, Mindfulness Center at Brown University School of Public Health
Todd Iarussi, PCC, adjunct teacher, Workplace and Leadership Education, Mindfulness Center at Brown University School of Public Health

Inclusive Leadership

Narragansett Bayview, 17th Floor

To lead effectively, leaders need to be open to new ideas from diverse voices. How can we encourage and hear input from different individuals and communities than we have in the past? How do we make sure that all constituents feel heard, and make sure we are truly representing the people we are leading? In this workshop, we explore leadership methods and techniques that level power differences, elevate voices and engage communities at a deeper level.

FACILITATOR:

Jillian Hubbard, Founder and Principal, Jillian Hubbard Consulting

No Advocacy Group? Let's Talk!

Summit A, B & C, 18th Floor

Several states lack a citizen advocacy group to mobilize support or lobby on behalf of the arts. Although the circumstances vary, this situation often raises thorny questions for state arts agencies: How much advocacy can a state arts agency manage? Should a state arts agency wait until an advocacy group self-organizes, or can a new group be proactively cultivated? What partnerships are helpful? What silver linings may exist when an advocacy group doesn't? Share your own questions, experiences and insights in this facilitated conversation about the agonies and ecstasies of DIY advocacy.

FACILITATOR:

Kelly Barsdate, Chief Program and Planning Officer, NASAA

12:30 – 1:30 P.M.

Networking Luncheon

Capital Ballroom, 2nd Floor

1:30 – 3:00 P.M.

Strategic Partnership Sessions

Partnering for Public Health:

Rhode Island Arts and Health Network

L'Apogee A & B, 17th Floor

The Rhode Island Arts and Health Network is an interdisciplinary team of creative practitioners, clinicians and researchers who are leading the state's efforts to integrate the arts and arts based therapies into health care. Originating from a partnership between the Rhode Island Department of Health and the Rhode Island State Council on the Arts, this network promotes innovative policies, practices and research. Join this discussion to meet network members, learn how this partnership is measuring impact, and gain tips on collaborating with health providers in both clinical and community settings.

PRESENTERS:

Sherilyn Brown, Arts and Healthcare, Rhode Island State Council on the Arts
Steven Boudreau, Chief Administrative Officer, Rhode Island Department of Health
Jill Sonke, Director, University of Florida Center for Arts in Medicine
Dr. Stacey Springs, Research Associate in Health Services, Policy and Practice, Brown School of Public Health

Collaboration in Creative Aging

Narragansett Bayview, 17th Floor

Creative aging programs are springing up across the country, improving the lives and well-being of older adults, enriching the arts sector and benefiting communities. In 2016, Aroha Philanthropies developed a multiyear initiative with its partner, Lifetime Arts, that is equipping 50 grantees from Alaska to Puerto Rico with the tools to develop and share these programs. Through this initiative and others, arts and cultural organizations are creating successful cross-sector collaborations with state agencies and organizations serving active older adults. In this session, you will discover the outcomes reported by participants, what it takes to develop successful collaborations and how the arts ecosystem is being strengthened by engaging older adults as art makers.

PRESENTERS:

Teresa Bonner, Executive Director, Aroha Philanthropies
Maura O'Malley, Cofounder and CEO, Lifetime Arts
Diana Champa, Director of Literary Engagement, School One

(continued)

SESSIONS & EVENTS

FRIDAY, SEPTEMBER 20

1:30 – 3:00 P.M.

Strategic Partnership Sessions (cont.)

Economically Sound: Creating Partnerships for Economic Development

Ocean State Suite B, 2nd Floor

Arts and culture are vital to state economies, but it is the behind-the-scenes partnerships that make the connections and keep the wheels moving. Join your peers from Colorado Creative Industries and the Maryland State Arts Council to find out how they translate their work into terms economic developers understand and cultivate strategic partnerships to help drive creative industries forward in their states.

MODERATOR:

Tim Schultz, Chair, Colorado Creative Industries

PRESENTERS:

Margaret Hunt, Director,
Colorado Creative Industries

Ken Skrzysz, Executive Director,
Maryland State Council on the Arts

What's Next for the National Endowment for the Arts Partnerships Program?

Summit A, B & C, 18th Floor

Join the National Endowment for the Arts for a discussion about the future of the State & Regional Partnerships program. Michael Orlove and Andi Mathis invite state and regional leaders to add your voices, observations and creative thinking to a conversation designed to help inform moving the program forward.

PRESENTERS:

Michael Orlove, Director, State, Regional & Local Partnerships, National Endowment for the Arts

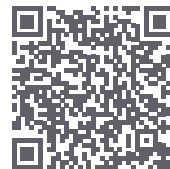
Andi Mathis, State & Regional Specialist,
National Endowment for the Arts

3:30 – 5:00 P.M.

Closing Plenary

Biltmore Ballroom, 17th Floor

Cast your vote during NASAA's annual business meeting and hear Leadership Institute reflections by Conference Artist-in-Residence Vatic Kuumba, then complete your visit with a spirited performance by **Sidy Maiga**.



BUSINESS MEETING
MATERIALS



Sidy Maiga (center)

GENERAL INFORMATION

Name Badges

Your name badge is your “admission ticket” to conference sessions and special events. Be sure to wear it during all conference functions. If you lose or misplace your badge, you may replace it at the NASAA Staff Office. Ribbons attached to name badges are identified below.

YELLOW
BLACK
BLUE

NASAA staff
NASAA board
Rhode Island State Council
on the Arts, our host

RED
PURPLE

Speaker, presenter or facilitator
Sponsor or donor



Badges with a gold star indicate a first-time attendee. Please help us welcome all newcomers to our NASAA community!

Meeting Site

Unless otherwise indicated, all meetings take place at:

Graduate Providence Hotel
11 Dorrance Street
Providence, Rhode Island 02903

Leadership Institute Registration

Atrium Balcony, 2nd Floor

The Leadership Institute registration desk is open during these times:

- Wednesday, September 18
9:00 a.m. – 6:00 p.m.
- Thursday, September 19
7:30 a.m. – 5:00 p.m.

If you miss registration, please visit the NASAA Staff Office.

NASAA Staff Office

Ocean State Suite A, 2nd Floor

If you missed registration, lost your badge or have a question concerning the meeting, stop by the NASAA Staff Office. Hours are:

- Wednesday, September 18
9:00 a.m. – 5:00 p.m.
- Thursday, September 19
7:30 a.m. – 6:00 p.m.
- Friday, September 20
7:30 a.m. – 6:00 p.m.

Documentation

NASAA uses a variety of media (including photography and video and audio recording) to capture conference proceedings. NASAA may disseminate selected material, images or recordings for documentation, education and promotion purposes.

Photo Credits

Page 4 Courtesy of Alex Grichenko
(publicdomainpictures.net)

Page 6 Courtesy of GoProvidence

Page 11 Mary Anne Carter
Courtesy of the National Endowment
for the Arts

Benjamin Brown
Courtesy of GeorgeLong.com

Andrea Noble
Courtesy of Matt Tunseth

Page 19 Courtesy of Liz West

SPONSORS & ACKNOWLEDGMENTS



Special Thanks

Alliance of Artists Communities
Arden Engineering
Dimeo Construction
Iron Workers Local 37
Kara and David Milner

Rhode Island Delegation:
Sen. Jack Reed
Sen. Sheldon Whitehouse
Rep. David Cicilline
Rep. Jim Langevin

The work of NASAA and state arts agencies is strengthened in many ways through partnership with the National Endowment for the Arts.

FROM THE DEVELOPMENT COMMITTEE CHAIR

Dear friends,

Thank you for attending this conference. Gatherings like this remind me how important our community is to my work in Missouri: I hear what’s happening in other states, I learn from others’ experiences and I remember that I’m not alone. Just like the arts, our coming together helps me see things in new ways, deepens connections and inspires me.



Nola Ruth

This is what we do in the world – and this is why our work is so important. Through the arts, we help people make sense of their worlds, and in doing so we make some of the greatest contributions to society.

Through our work, we make it possible for millions of Americans to talk about and reflect on human experiences, histories and traditions – our own and others. Through music and dance and painting, weaving and beading, sculpture and carving, theatre, storytelling and poetry, we make it possible for people to encounter ideas and events that otherwise might be too difficult to face. In providing opportunities to experience creativity, we help people find meaning and solace, individually and collectively.

Through the arts we tend to our common humanity. With respect, grit, grace and generosity, we help Americans expand, transform and enrich their lives. The team at NASAA understands the powerful influence of the arts and the incredible ability of our work to bring people together, which is why they work so hard every day on our behalf.

Thanks to NASAA’s top-notch advocacy, outstanding data and research, and commitment to our professional community, state arts agencies have the resources and support we need to strengthen the thousands of communities we serve and impact every day.

Please make a gift to NASAA today. When NASAA thrives, so do state arts agencies, which means richer, more creative, more vibrant communities for millions of Americans in every corner of the country.

Stop by the fundraising table today to give, or go on-line at nasaa-arts.org.

Thank you for your great work on behalf of the arts. And thank you for supporting NASAA!

Nola Ruth
Council Member and Former Chair, Missouri Arts Council
Director, NASAA Board
Chair, NASAA Development Committee

THANK YOU!

A very heartfelt thank-you to our donors and partners, who generously support NASAA’s work. Your gifts empower state arts agencies with the knowledge, representation and community they need to keep the arts strong across the country. Thank you!

\$100,000+

Aroha Philanthropies²
ArtPlace America¹

\$20,000 - \$50,000

Rhode Island State Council
on the Arts¹
Nola Ruth*¹⁰
Ginger Warner¹⁰

\$10,000 - \$19,999

Martha S. MacDonell¹³

\$5,000 - \$9,999

Steve and Ann Bailey⁴
Todd P. Lowe¹¹
Maynard C. Smith
Construction Company, Inc.⁸
Mid-America Arts Alliance²
New England Foundation
for the Arts¹
Barbara Robinson –
Robinson Family Philanthropic
Fund of the Jewish
Federation of Cleveland¹⁵
Rhode Island Foundation¹
John* and Pat Strickland⁸

\$1,000 - \$4,999

Patricia Bizzell⁹
Pam Breaux¹³
City of Providence Department of
Art, Culture + Tourism¹
Donna Collins*⁶
Stephanie B. Conner*⁸
The Daniel Foundation
of Alabama⁶
Alice B. Diamond²
Camellia El-Antably⁸
Michael Faison*¹¹
Kay Kendall⁴
Kara and David Milner²
Bruce A. Richardson¹²
Laura S. Smith¹⁶
Diane P. Stewart⁸
Carol Trawick⁶
Stuart Weiser⁶
James A. West, Jr./
Studio Wild West⁵

\$500 - \$999

Kelly Barsdate¹⁰
Sharon Beshore⁶
Gary Gibbs¹⁰
Jill Hackney¹
Bobby Kadis¹³
Margot Knight¹⁰
Ken May*¹⁰
Nancy and Steven Oliver¹
John and Susan Ostrout⁴
Julie Shiffer Vigeland*⁷

\$250 - \$499

Cheryl Castille²
Theresa Colvin¹⁰
Thomas Cordingley⁶
Christine D’Arcy⁸
Michael Donovan⁷
Cathy Edwards³
David J. Fraher¹³
Sue Gens⁷
Monica Guzman*⁵
Al Head⁸
Garbo Hearne*⁶
Chris Kramer¹
Charles and Marquette Mathena³
Jeffrey A. Parks²
Karen L. Paty*⁸
Thomas P. Preston and
Laura A. Scanlan²
Sylvia Prickett⁷
Mary Regan¹¹
Lewis and Maggie Ricci⁷
Randall Rosenbaum¹¹
Mary Margaret Schoenfeld*⁹
Marcia Neuhaus Speck⁷
Charles V. Stanhope⁸
Susan Steinhauser and
Daniel Greenberg –
The Greenberg Foundation⁸
Suzette Surkamer¹⁶
Lisa and Andy Weil⁵
Malcolm White³
Jennifer Wolfe³

\$100 - \$249

Nicholas Abramczyk¹
Lisa and James Alderman⁷
Cyndy Andrus*⁶
Anonymous⁹
Julia I. Arger⁵
Eduardo Arosemena-Muñoz¹
Kira Bacon¹
Lona A. Barrick⁷
Alan Becker²
Bassem Bejjani⁴
Lily Bengfort¹
Lee and Jacqueline Berry⁶
Barbara Bershon⁸
Karl Blischke¹
Susan Boskoff¹⁰
Bill and Ruth Botzow¹⁵
Victoria Panella Bourns³
Ardell Brede²
David W. Briggs¹¹
Dale W. Brock⁵
Dr. Roger C. and
Carol Durgy Brooks⁹
Benjamin Brown*¹¹
Gin Brown³
Lisa Burk-McCoy¹
Lynne and Bill Byrne³
CA Technologies, Inc.⁸
Sean Chandler¹

Michael J. Charron⁸
Tony Chauveaux³
Libby Chiu¹
Nicolette B. and Peter Clarke¹⁶
Nancy Cooper and Curtis Porter⁴
Mary Michael Corbett⁶
Jo Crandall¹¹
Delores Crawford¹
Patricia and Dennis Dewey¹⁰
Katharine H. Dickenson⁵
Susan Dickson¹
Heather Doughty²
Joseph L. Dowling Jr., M.D.²
Sean Dowse¹
Lu Ellsworth¹⁶
Karen Engelke¹
Dawn E. Enochs⁹
David and Nina Fialkow³
Shannon Ford¹
William G. Francis¹⁷
Jeffrey W. Gabel/Gettysburg
College’s Majestic Theater⁴
Tatiana Gant⁴
Alma H. Gates²
Sara Lee Gibb¹²
Karen Hanan⁵
Matthew Harris⁴
Dr. Sarah Lynn Hayes⁶
Candy and Tom Henning⁵
Mark and Lynn Hofflund¹⁶
Fran Holden¹⁰
Philip Horn¹¹
Katie Hughes³
Margaret Hunt⁹
Jean Tokuda Irwin²
Jonathan Johnson²
Muriel P. Johnson¹⁰
Jackie Kahle and
Michael Dell’Orto¹⁰
Daniel Katona²
Phyllis Kennedy⁴
Charlotte Kessler⁷
Lynn Kessler¹²
Maria Kompare⁵
Michael Lange³
Judy Langley⁹
Dr. and Mrs. R. W. Lengeling⁷
Joseph P. Logan¹
Robert L. Lynch⁵
Joan M. G. Lyon²
Julia Madden¹
Antzee Magruder³
Bill Mandicott¹¹
Mara Manus²
Michael Markey⁴
Cassandra Mason⁵
Mary W. McLaughlin⁴
Jim Bob McMillan⁴
Dorothy McSweeney¹²
Lori Meadows¹⁰
Larry and Cindy Meeker⁴
Gene Meneray¹
Metropolitan Group¹

Shelley Cole Morhaim⁶
Kathleen Morrissey²
Susan Oetgen²
Michael Pangburn⁷
Paula Pflueger⁴
Anne B. Pope⁴
Molly Leach Pratt⁴
Charles and Bernice Price¹⁴
Billye Proctor Shaw¹¹
Julie Richard⁴
Hannah Robson⁴
Ms. Carol Rothschild⁷
Laurence H. Rubinstein³
Omari Rush*³
Laurel Sayer⁴
Thomas H. Sayre¹⁰
Tom and Liz Schorgl⁴
J. Barry Schrenk⁵
Steve Schrepferman³
Paige Sharp¹
Sandy Shaughnessy*¹²
Malissa Feruzzi Shriver⁷
Kenneth Skrzesz²
Libby Slader⁴
Heather Smith¹
Lorén Spears²
Beverly Strohmeier⁷
Taylor Strategies and
Consulting, LLC²
Nancy Trovillion⁴
Holly Turner¹
Margaret Vanderhye⁵
Richard J. Vierk⁸
Gary Vikan⁵
Sherman Warner⁶
Joseph Mack Wathen⁵
Carol White¹
Laura Wiegand¹
Anne Winter West¹
Suzanne Wise*¹²
Neal Zimmers⁴

\$50 - \$99

Carole Alexander⁵
Kathy Z. Anderson²
Patrick Baker¹
Dr. Sonya G. Baker and
Mr. Michael J. Fazio⁶
Adelheid “Micky” Becker¹
Alice Bioff¹
Robert C. Booker¹⁸
Jason P. Bowcutt⁴
Ms. Shawn Brevard⁷
Carol R. Brown¹³
Susan Browne²
Michael Burke²
G.B. Carson⁴
Nancy Daugherty¹
Jaime Dempsey¹⁰
Jay Dick¹
Marilyn Dore⁵
Dana Douglass Swann¹
Jennifer Dreibelbis²

Carla Du Pree*¹
Justine Estes³
Loie Fecteau¹¹
Dia Foley¹
Shelly Gilbride¹
E. Jeanne Gleason⁴
Monica Grable¹
Ann S. Graham²
Tami Graham¹
Remica Gray¹
Nancy Harbour⁸
Linda Hatchel⁶
Lisa Hoffman*¹
Cinda Holt⁶
Milly Hough¹
Peter Jasso²
Ira Jerome and Nina Jackson²
Fritz Jellinghaus⁴
Eileen Jeng Lynch/Neumeraki²
Marie L. Junaluska⁶
Margaret (Peggy) Kannenstine¹⁰
Dennis Kavanaugh¹⁵
George Koch⁹
Kim Konikow¹
Susan Lander³
Tony Manfredi¹
George Marks²
Darryl D. Mehaffie³
Josie Mendoza⁴
Jeanne Meyers⁴
Ann Marie and David Miller¹²
Rebecca L. Moore¹
Chiquita Mullins Lee¹
Cynthia A. Murray-Beliveau⁸
Patti B. Nelson⁴
Tog and Michael Newman⁷
Gail Nunziata¹
Arlene Parisot²
Rhoda A. Pierce¹²
Allen Platt¹
Mollie Quinlan-Hayes⁸
Patrick Ralston¹
John Rasmussen¹
Brian Rogers²
Clyde Sakamoto¹
Rachelle Saltzman¹
Sandi Sanders²
Virginia R. Sanders³
Ivan Schustak¹
Amber Sharples*⁴
Steven Skerritt-Davis¹
David Slatery⁵
Connie Souto Learman²
Janet Starke¹
William Stein²
Karen Stewart⁶
Ryan Stubbs¹
Searle Swedlund²
Karen C. Thurland, Ph.D.¹
Dr. Louise Toppin⁶
An-Ming Truxes⁸
Kris Tucker⁸
Lana Gold Walder⁸
Peter Warburton¹
Alison Watson²
Janine Webb⁸
Robert White¹
Crystal Young-Otterstrom¹

\$1 - \$49

vNessa Acham¹
Laurel Cannon Alder²
Anonymous²
Jess Anthony¹
Brad Bachmeier⁴
Meredith Bell¹
Robin Bosch¹
Marjorie Camardelle²
Dorothy E.F. Caram, Ed.D.²
Carroll County Arts Council⁵
Bill Coleman¹
Todd Coniff¹
Michael Cover¹
Keith Donohue¹
Susan DuPlessis¹
Trisha Dwyer-Morgan¹
Joel Foy¹
Julianne Gadoury²
Jeff Garrett¹
Sara W. Germain³
Eric Giles⁴
Diana F. Green¹
Laura Marcus Green¹
Julie Hale⁵
Patricia Hamilton-Ross¹
Kristin Han Burgoyne⁴
Tracy Hansford¹
Julie Henahan⁷
Mary Donnet Johnson⁵
Dr. José and Ingrid Lezcano¹
Matthew McClellan¹
MaryAnn Miller⁴
Dana Parsons¹
Jason Pyette¹
Lorraine Rao¹
Stephen Reid¹
Donna Rice³
Kari Rice¹
Lorraine Hale Robinson⁴
Maria Hall Rooney¹
Steve Runk⁸
Terri B. Salazar⁶
Lance Schrader¹
Heran Sereke-Brhan¹
Kiran Singh Sirah¹
Bill Smith¹
Jes Sokolowski¹
Ronald Stith¹
Lisette Sweetland¹
Linda Tyler¹
Mara Walker¹

This list acknowledges 2018 and 2019 contributions. The number after each name identifies the number of years giving, and the categories reflect the most recent level of giving. This list is current as of September 5, 2019. If you would like to join this list or report any corrections, please contact Katie Hughes at 202-347-6352 x108.

* 2019 NASAA board member
+ deceased

Gifts Made in Honor

In honor of Kelly Barsdate, made by An-Ming Truxes
In honor of Black Hills Chamber Music Society,
made by Justine Estes
In honor of Pam Breaux, made by Loie Fecteau
In honor of María López De León, made by Pam Breaux
In honor of Loie Fecteau, made by Nancy Cooper
and Curtis Porter
In honor of Gary Gibbs, made by Pam Breaux
In honor of Justin Brice Guariglia, made by
Eileen Jeng Lynch, Neumeraki
In honor of Albert Head, made by Lee and Jackie Berry
In honor of Albert Head, made by Philip and Anne Horn
In honor of Albert Head, made by Malcolm White
In honor of the Iowa Arts Council, made by Matthew Harris
In honor of Ken May, made by Susan DuPlessis
In honor of Joe Nanashe, made by
Eileen Jeng Lynch, Neumeraki
In honor of NASAA staff, made by Bill Mandicott
In honor of Katherine Newbegin,
made by Eileen Jeng Lynch, Neumeraki
In honor of the New England Foundation for the Arts,
made by Cathy Edwards
In honor of the Nome Arts Council, made by Alice Bioff
In honor of Molly Leach Pratt,
made by Steve and Ann Bailey
In honor of Pablo Pua’a, made by Benjamin Brown
In honor of David Reed,
made by Eileen Jeng Lynch, Neumeraki
In honor of Daniel Rich,
made by Eileen Jeng Lynch, Neumeraki
In honor of Rudy Shepherd,
made by Eileen Jeng Lynch, Neumeraki
In honor of Laura Smith, made by Patricia Bizzell
In honor of Edra Soto,
made by Eileen Jeng Lynch, Neumeraki
In honor of Meg Stein,
made by Eileen Jeng Lynch, Neumeraki
In honor of Dannielle Tegeder,
made by Eileen Jeng Lynch, Neumeraki
In memory of John Benjamin, made by Nancy Daugherty
In memory of Mary Britt, Ocala Civic Theatre Memorial,
made by Thomas Cordingley
In memory of Aaron Hinson, made by Rebecca L. Moore
In memory of Princess Red Wing, cofounder of
Tomaquag Museum, made by Lorén Spears
In memory of Oscar Remick, made by Heather Doughty
In memory of Janice Shannon, made by Karen Engelke
In memory of Dr. Richard Sidwell Smith,
made by Julie Vigeland



BOARD & STAFF

Rhode Island State Council on the Arts

COUNCIL

- Chair** Libby Slader Narragansett
- Vice Chair** Kate Blacklock Providence
- Secretary** Kara Milner Bristol
- Dominique Alfandre Newport
- Joseph Dowling Narragansett
- Jennifer R. Fonseca East Providence
- Lorraine Hynes Cumberland
- Jason Pamental East Providence
- Kate Petrie Jamestown
- Lawrence Purtill Narragansett
- Katherine Quinn Bristol
- Gretchen Dow Simpson Providence
- Lorén M. Spears (Narragansett) Charlestown

STAFF

- Randall Rosenbaum**
Executive Director and 504/ADA Coordinator
- Maggie Anderson** Director, Arts in Education
- Sherilyn Brown** Arts and Healthcare
- Carol Conley** Assistant to the Executive Director,
Rhode Island Film and Television Office
- Steven Feinberg** Executive Director,
Rhode Island Film and Television Office
- Elena Calderón Patiño**
Director of Community Arts Program
- Donna Fiske** Fiscal and Office Manager

- Mollie Flanagan** Individual Artists
Program Director
- Elizabeth Keithline** Public Art Program Consultant
- Lew Place** Webmaster, Location
Photographer, Video Editor,
Rhode Island Film and Television Office
- Todd Trebour** Organizations Program Director


(continued)

Welcome to Providence, home of the Alliance of Artists Communities!
NASAA members, we hope you'll join AAC and over 400 arts leaders to learn about residencies in your state when we convene in St. Paul next month!

ALLIANCE OF  ARTISTS COMMUNITIES




2019 ANNUAL CONFERENCE
october 28 - 31, 2019 :: st. paul, mn
artistcommunities.org/conference



**THE NATION'S FIRST
REGIONAL ARTS
ORGANIZATION**

Helping the arts thrive in Arkansas,
Kansas, Missouri, Nebraska, Oklahoma, and Texas



MID-AMERICA ARTS ALLIANCE

2018 BALTIMORE AVE., KANSAS CITY, MISSOURI 64108 | WWW.MAAA.ORG | 816-800-0926

DIMEO CONSTRUCTION COMPANY
proudly supports
the 2019 Leadership Institute
National Assembly of State Arts Agencies (NASAA).



BOSTON // PROVIDENCE // NEW HAVEN



www.dimeo.com

BOARD & STAFF

NASAA Board of Directors

- Chair** Benjamin Brown, Chair
Alaska State Council on the Arts
- 1st Vice Chair** Suzanne Wise, Executive Director
Nebraska Arts Council
- 2nd Vice Chair** Stephanie Conner, Council Member
Tennessee Arts Commission
- Treasurer** Ken May, Former Executive Director
South Carolina Arts Commission
- Secretary** Omari Rush, Chair
Michigan Council for Arts and Cultural Affairs
- Directors**
- Cyndy Andrus, Chair
Montana Arts Council
- Donna Collins, Executive Director
Ohio Arts Council
- María López De León, President & CEO
National Association of Latino Arts and Cultures
- Carla Du Pree, Council Member
Maryland State Arts Council
- Michael Faison, Executive Director
Idaho Commission on the Arts
- Monica Guzman, Former Chair
Guam Council on the Arts & Humanities Agency
- Garbo Hearne, Former Chair
Arkansas Arts Council
- Lisa Hoffman, Executive Director
Alliance of Artists Communities
- Karen L. Paty, Executive Director
Georgia Council for the Arts
- Nola Ruth, Council Member
Missouri Arts Council

- Mary Margaret Schoenfeld, National Coordinator
U.S. Regional Arts Organizations
- Amber Sharples, Executive Director
Oklahoma Arts Council
- Sandy Shaughnessy, Division Director
Florida Division of Cultural Affairs
- John Strickland, Chair
West Virginia Commission on the Arts
- Julie Vigeland, Former Chair
Oregon Arts Commission

*Proud to Support the National
Assembly of State Arts Agencies*

*From the Officers & Members
Of
Local 37 Iron Workers*

*David Langlais, Business Manager/FST
Armand “Mickey” Larose, President
Russell Lachance, Business Agent
Timothy Leonard, Recording Secretary*

Design. Construct. Maintain.

The one-stop provider for your building’s mechanical, HVAC, electrical, plumbing, and fire protection system needs.

401-727-3500 • www.ardeneng.com

NASAA Staff

- Pam Breaux President and CEO

Kelly Barsdate Chief Program and Planning Officer

Sylvia Prickett Chief Operating Officer

Laura S. Smith, CFRE Chief Advancement Officer

Isaac Brown Legislative Counsel

Eric Giles Learning Services Director

Katie Hughes Development Manager

Kelly Liu Grants Data Associate

Patricia Mullaney-Loss Research Associate
- Susan Oetgen Professional Development Institute Manager

Paul Pietsch Research Manager

Connie Souto Learman Special Assistant to the President and CEO

Sue Struve Communications Manager

Ryan Stubbs Senior Director of Research

Sandi Tun Operations Manager

Feby Varghese Executive Associate to the Chief Program and Planning Officer



SAVE THE DATE



NASAA ASSEMBLY 2020

OCTOBER 19-23, 2020



SAN JUAN, PUERTO RICO



INSTITUTO
de CULTURA
PUERTORRIQUEÑA

National Assembly of State Arts Agencies

KNOWLEDGE ★ REPRESENTATION ★ COMMUNITY

1200 18th Street NW, Suite 1100 | Washington, D.C. 20036
phone 202-347-6352 | fax 202-737-0526 | TDD 202-296-0567
nasaa@nasaa-arts.org |  @NASAA.Arts |  @NASAA_Arts

WWW.NASAA-ARTS.ORG

Program design and layout by **insight180**